

STAM2 (Phospho-Tyr192) Polyclonal Antibody

Catalog No: #12250



Package Size: #12250-1 50ul #12250-2 100ul

Orders: order@signalwayantibody.comSupport: tech@signalwayantibody.com

Description

Product Name	STAM2 (Phospho-Tyr192) Polyclonal Antibody
Host Species	Rabbit
Clonality	Polyclonal
Purification	The antibody was affinity-purified from rabbit antiserum by affinity-chromatography using epitope-specific immunogen.
Applications	WB IHC ELISA
Species Reactivity	Hu Ms
Specificity	Phospho-STAM2 (Y192) Polyclonal Antibody detects endogenous levels of STAM2 protein only when phosphorylated at Y192.
Immunogen Type	peptide
Immunogen Description	Synthesized peptide derived from human STAM2 around the phosphorylation site of Y192.
Target Name	STAM2
Modification	Phospho
Other Names	STAM2; HBP; Signal transducing adapter molecule 2; STAM-2; Hrs-binding protein
Accession No.	Swiss-Prot: O75886NCBI Gene ID: 8986
Uniprot	O75886
GeneID	10254;
Target Species	human
SDS-PAGE MW	58kd
Concentration	1mg/ml
Formulation	Liquid in PBS containing 50% glycerol, 0.5% BSA and 0.02% sodium azide.
Storage	Store at -20°C/1 year

Application Details

Western blotting: 1/500 - 1/2000

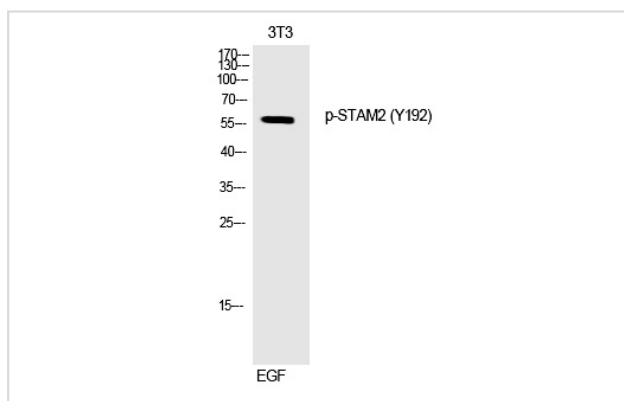
Immunohistochemistry: 1/100 - 1/300

ELISA: 1/10000

Not yet tested in other applications

Images

Western Blot analysis of 3T3 cells using Phospho-STAM2 (Y192) Polyclonal Antibody



Note: This product is for in vitro research use only