

## c-Fos (Phospho-Ser32) Polyclonal Antibody

Catalog No: #12257

Package Size: #12257-1 50ul #12257-2 100ul

Orders: [order@signalwayantibody.com](mailto:order@signalwayantibody.com)Support: [tech@signalwayantibody.com](mailto:tech@signalwayantibody.com)

## Description

Product Name	c-Fos (Phospho-Ser32) Polyclonal Antibody
Host Species	Rabbit
Clonality	Polyclonal
Purification	The antibody was affinity-purified from rabbit antiserum by affinity-chromatography using epitope-specific immunogen.
Applications	WB ELISA
Species Reactivity	Hu Ms Rt
Specificity	Phospho-c-Fos (S32) Polyclonal Antibody detects endogenous levels of c-Fos protein only when phosphorylated at S32.
Immunogen Type	peptide
Immunogen Description	Synthesized peptide derived from human c-Fos around the phosphorylation site of S32.
Target Name	c-Fos
Modification	Phospho
Other Names	FOS; G0S7; Proto-oncogene c-Fos; Cellular oncogene fos; G0/G1 switch regulatory protein 7
Accession No.	Swiss-Prot: P01100NCBI Gene ID: 2353
Uniprot	P01100
GeneID	2353;
Target Species	human
SDS-PAGE MW	45kd
Concentration	1mg/ml
Formulation	Liquid in PBS containing 50% glycerol, 0.5% BSA and 0.02% sodium azide.
Storage	Store at -20°C/1 year

## Application Details

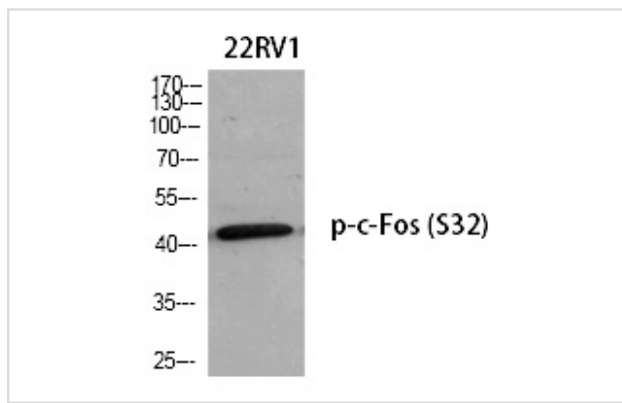
Western blotting: 1/500 - 1/2000

ELISA: 1/5000

Not yet tested in other applications

## Images

Western Blot analysis of 22RV1 cells using Phospho-c-Fos (S32) Polyclonal Antibody



---

Note: This product is for in vitro research use only