

## Dynamin I (Phospho-Ser778) Polyclonal Antibody

Catalog No: #12260

Package Size: #12260-1 50ul #12260-2 100ul

Orders: [order@signalwayantibody.com](mailto:order@signalwayantibody.com)Support: [tech@signalwayantibody.com](mailto:tech@signalwayantibody.com)

## Description

Product Name	Dynamin I (Phospho-Ser778) Polyclonal Antibody
Host Species	Rabbit
Clonality	Polyclonal
Purification	The antibody was affinity-purified from rabbit antiserum by affinity-chromatography using epitope-specific immunogen.
Applications	WB ELISA
Species Reactivity	Hu Ms Rt
Specificity	Phospho-Dynamin I (S778) Polyclonal Antibody detects endogenous levels of Dynamin I protein only when phosphorylated at S778.
Immunogen Type	peptide
Immunogen Description	Synthesized peptide derived from human Dynamin I around the phosphorylation site of S778.
Target Name	Dynamin I
Modification	Phospho
Other Names	DNM1; DNM; Dynamin-1
Accession No.	Swiss-Prot: Q05193NCBI Gene ID: 1759
Uniprot	Q05193
GeneID	1759;
Target Species	human
SDS-PAGE MW	100kd
Concentration	1mg/ml
Formulation	Liquid in PBS containing 50% glycerol, 0.5% BSA and 0.02% sodium azide.
Storage	Store at -20°C/1 year

## Application Details

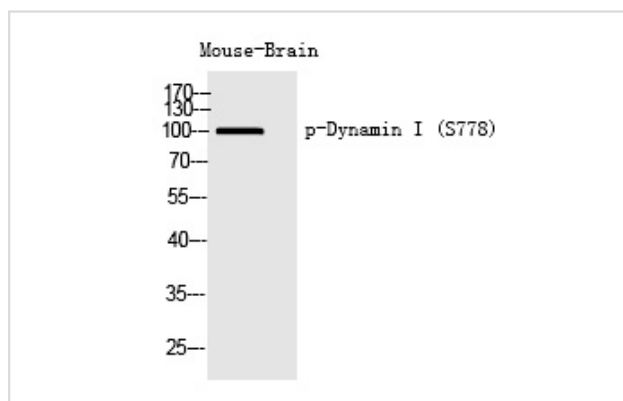
Western blotting: 1/500 - 1/2000

ELISA: 1/20000

Not yet tested in other applications

## Images

Western Blot analysis of Mouse-Brain cells using Phospho-Dynamin I (S778) Polyclonal Antibody



Note: This product is for in vitro research use only