

VCP (Phospho-Ser352) Polyclonal Antibody

Catalog No: #12263

Package Size: #12263-1 50ul #12263-2 100ul

Orders: order@signalwayantibody.comSupport: tech@signalwayantibody.com

Description

Product Name	VCP (Phospho-Ser352) Polyclonal Antibody
Host Species	Rabbit
Clonality	Polyclonal
Purification	The antibody was affinity-purified from rabbit antiserum by affinity-chromatography using epitope-specific immunogen.
Applications	WB ELISA
Species Reactivity	Hu Ms Rt
Specificity	Phospho-VCP (S352) Polyclonal Antibody detects endogenous levels of VCP protein only when phosphorylated at S352.
Immunogen Type	peptide
Immunogen Description	Synthesized peptide derived from human VCP around the phosphorylation site of S352.
Target Name	VCP
Modification	Phospho
Other Names	VCP; Transitional endoplasmic reticulum ATPase; TER ATPase; 15S Mg(2+)-ATPase p97 subunit; Valosin-containing protein; VCP
Accession No.	Swiss-Prot: P55072NCBI Gene ID: 7415
Uniprot	P55072
GeneID	7415;
Target Species	human
SDS-PAGE MW	85kd
Concentration	1mg/ml
Formulation	Liquid in PBS containing 50% glycerol, 0.5% BSA and 0.02% sodium azide.
Storage	Store at -20°C/1 year

Application Details

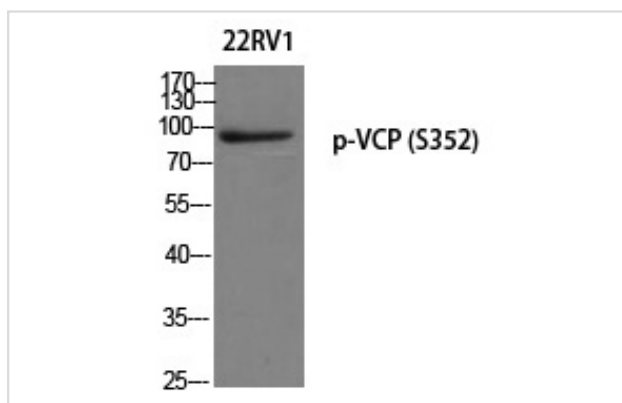
Western blotting: 1/500 - 1/2000

ELISA: 1/5000

Not yet tested in other applications

Images

Western blot analysis of 22RV1 using p-VCP (S352) antibody.



Note: This product is for in vitro research use only