

CREB-2 (Phospho-Ser219) Polyclonal Antibody

Catalog No: #12265

Package Size: #12265-1 50ul #12265-2 100ul

Orders: order@signalwayantibody.comSupport: tech@signalwayantibody.com

Description

Product Name	CREB-2 (Phospho-Ser219) Polyclonal Antibody
Host Species	Rabbit
Clonality	Polyclonal
Purification	The antibody was affinity-purified from rabbit antiserum by affinity-chromatography using epitope-specific immunogen.
Applications	WB ELISA
Species Reactivity	Hu Ms
Specificity	Phospho-CREB-2 (S219) Polyclonal Antibody detects endogenous levels of CREB-2 protein only when phosphorylated at S219.
Immunogen Type	peptide
Immunogen Description	Synthesized peptide derived from human CREB-2 around the phosphorylation site of S219.
Target Name	CREB-2
Modification	Phospho
Other Names	ATF4; CREB2; TXREB; Cyclic AMP-dependent transcription factor ATF-4; cAMP-dependent transcription factor ATF-4; Activating transcription factor 4; Cyclic AMP-responsive element-binding protein 2; CREB-2; cAMP-responsive element-binding prot
Accession No.	Swiss-Prot: P18848NCBI Gene ID: 468
Uniprot	P18848
GeneID	468;
Target Species	human
SDS-PAGE MW	38kd
Concentration	1mg/ml
Formulation	Liquid in PBS containing 50% glycerol, 0.5% BSA and 0.02% sodium azide.
Storage	Store at -20°C/1 year

Application Details

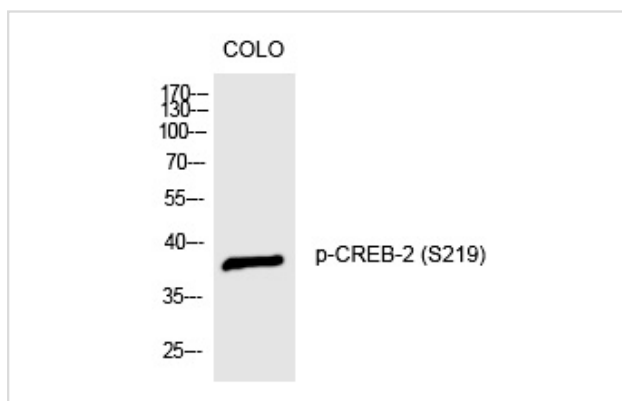
Western blotting: 1/500 - 1/2000

ELISA: 1/10000

Not yet tested in other applications

Images

Western Blot analysis of CoLo cells using Phospho-CREB-2 (S219) Polyclonal Antibody



Note: This product is for in vitro research use only