

## Fibrinogen gamma antibody

Catalog No: #22542

Orders: order@signalwayantibody.com

Support: tech@signalwayantibody.com

## Description

Product Name	Fibrinogen gamma antibody
Host Species	Rabbit
Clonality	Polyclonal
Purification	Purified by antigen-affinity chromatography.
Applications	WB IF
Species Reactivity	Hu
Immunogen Type	Recombinant protein
Immunogen Description	Recombinant protein fragment contain a sequence corresponding to a region within amino acids 1 and 415 of Fibrinogen gamma
Target Name	Fibrinogen gamma
Accession No.	Swiss-Prot:P02679Gene ID:2266
Uniprot	P02679
GeneID	2266;
Concentration	1mg/ml
Formulation	Supplied in 0.1M Tris-buffered saline with 10% Glycerol (pH7.0). 0.01% Thimerosal was added as a preservative.
Storage	Store at -20°C for long term preservation (recommended). Store at 4°C for short term use.

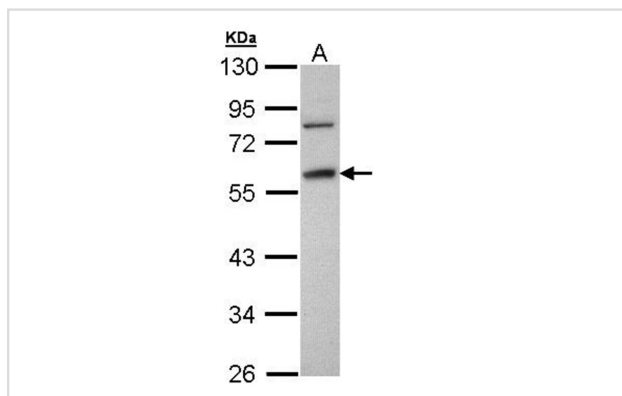
## Application Details

Predicted MW: 50kd

Western blotting: 1:500-1:3000

Immunofluorescence: 1:100-1:200

## Images



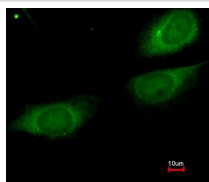
Sample (30 ug of whole cell lysate)

A: Molt-4

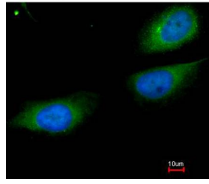
10% SDS PAGE

Primary antibody diluted at 1: 1000

Immunofluorescence analysis of paraformaldehyde-fixed HeLa, using Fibrinogen gamma antibody at 1:200 dilution.



Merged with DNA probe



## Background

The protein encoded by this gene is the gamma component of fibrinogen, a blood-borne glycoprotein comprised of three pairs of nonidentical polypeptide chains. Following vascular injury, fibrinogen is cleaved by thrombin to form fibrin which is the most abundant component of blood clots. In addition, various cleavage products of fibrinogen and fibrin regulate cell adhesion and spreading, display vasoconstrictor and chemotactic activities, and are mitogens for several cell types. Mutations in this gene lead to several disorders, including dysfibrinogenemia, hypofibrinogenemia and thrombophilia. Alternative splicing results in two transcript variants encoding different isoforms. [provided by RefSeq]

Note: This product is for in vitro research use only