

CD5 (Phospho-Tyr453) Polyclonal Antibody

Catalog No: #12269

Package Size: #12269-1 50ul #12269-2 100ul

Orders: order@signalwayantibody.comSupport: tech@signalwayantibody.com

Description

| | |
|-----------------------|---|
| Product Name | CD5 (Phospho-Tyr453) Polyclonal Antibody |
| Host Species | Rabbit |
| Clonality | Polyclonal |
| Purification | The antibody was affinity-purified from rabbit antiserum by affinity-chromatography using epitope-specific immunogen. |
| Applications | WB IHC IF |
| Species Reactivity | Hu Ms Rt |
| Specificity | Phospho-CD5 (Y453) Polyclonal Antibody detects endogenous levels of CD5 protein only when phosphorylated at Y453. |
| Immunogen Description | The antiserum was produced against synthesized peptide derived from human CD5 around the phosphorylation site of Tyr453. AA range:421-470 |
| Target Name | CD5 |
| Modification | Phospho |
| Other Names | CD5; LEU1; T-cell surface glycoprotein CD5; Lymphocyte antigen T1/Leu-1; CD antigen CD5 |
| Accession No. | Swiss-Prot: P06127NCBI Gene ID: 921 |
| Uniprot | P06127 |
| GeneID | 921; |
| Target Species | human |
| SDS-PAGE MW | 40kd |
| Concentration | 1mg/ml |
| Formulation | Liquid in PBS containing 50% glycerol, 0.5% BSA and 0.02% sodium azide. |
| Storage | Store at -20°C/1 year |

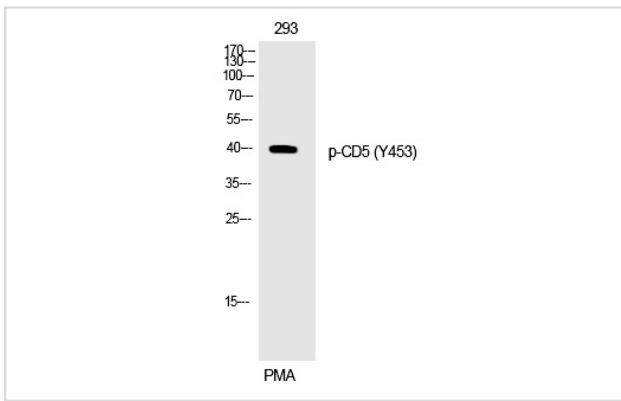
Application Details

Western blotting: 1/500 - 1/2000

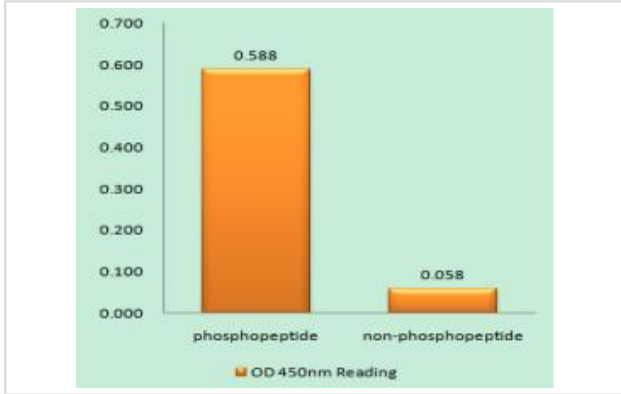
Immunohistochemistry: 1/100 - 1/300

Immunofluorescence: 1/200 - 1/1000

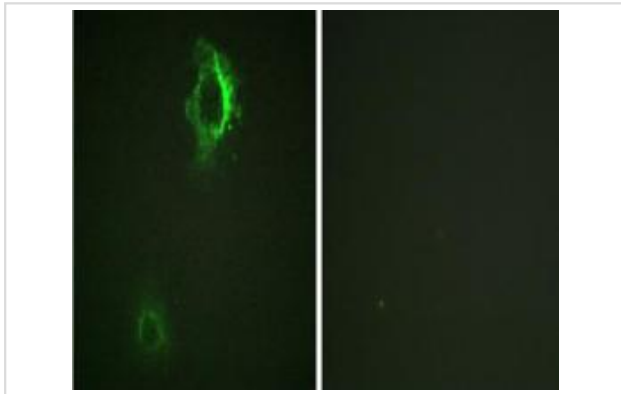
Images



Western Blot analysis of 293 cells using Phospho-CD5 (Y453) Polyclonal Antibody



Enzyme-Linked Immunosorbent Assay (Phospho-ELISA) for Immunogen Phosphopeptide (Phospho-left) and NonPhosphopeptide (Phospho-right), using CD5 (Phospho-Tyr453) Antibody



Immunofluorescence analysis of HepG2 cells, using CD5 (Phospho-Tyr453) Antibody. The picture on the right is blocked with the phospho peptide.

Note: This product is for in vitro research use only