

## Cytokeratin 18 (Phospho-Ser52) Polyclonal Antibody

Catalog No: #12270



Package Size: #12270-1 50ul #12270-2 100ul

Orders: [order@signalwayantibody.com](mailto:order@signalwayantibody.com)Support: [tech@signalwayantibody.com](mailto:tech@signalwayantibody.com)

## Description

Product Name	Cytokeratin 18 (Phospho-Ser52) Polyclonal Antibody
Host Species	Rabbit
Clonality	Polyclonal
Purification	The antibody was affinity-purified from rabbit antiserum by affinity-chromatography using epitope-specific immunogen.
Applications	WB IHC IF ELISA
Species Reactivity	Hu
Specificity	Phospho-Cytokeratin 18 (S52) Polyclonal Antibody detects endogenous levels of Cytokeratin 18 protein only when phosphorylated at S52.
Immunogen Type	peptide
Immunogen Description	Synthesized peptide derived from human Cytokeratin 18 around the phosphorylation site of S52.
Target Name	Cytokeratin 18
Modification	Phospho
Other Names	KRT18; CYK18; PIG46; Keratin; type I cytoskeletal 18; Cell proliferation-inducing gene 46 protein; Cytokeratin-18; CK-18; Keratin-18; K18
Accession No.	Swiss-Prot: P05783NCBI Gene ID: 3875
Uniprot	P05783
GeneID	3875;
Target Species	human
SDS-PAGE MW	48kd
Concentration	1mg/ml
Formulation	Liquid in PBS containing 50% glycerol, 0.5% BSA and 0.02% sodium azide.
Storage	Store at -20°C/1 year

## Application Details

Western blotting: 1/500 - 1/2000

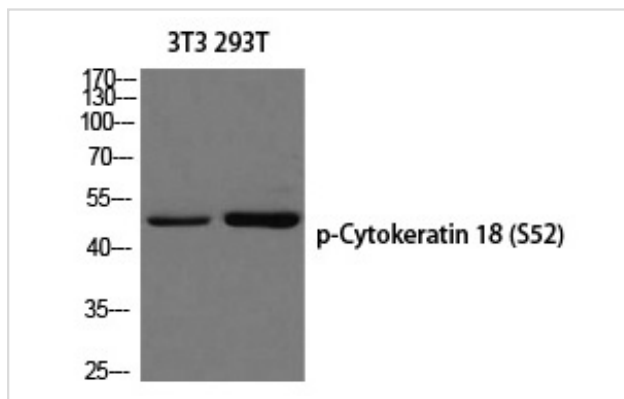
Immunohistochemistry: 1/100 - 1/300

Immunofluorescence: 1/200 - 1/1000

ELISA: 1/10000

Not yet tested in other applications

## Images



Western blot analysis of 3T3 293T using p-Cytokeratin 18 (S52) antibody.

---

Note: This product is for in vitro research use only