

## BAM32 (Phospho-Tyr139) Polyclonal Antibody

Catalog No: #12272

Package Size: #12272-1 50ul #12272-2 100ul

Orders: [order@signalwayantibody.com](mailto:order@signalwayantibody.com)Support: [tech@signalwayantibody.com](mailto:tech@signalwayantibody.com)

## Description

Product Name	BAM32 (Phospho-Tyr139) Polyclonal Antibody
Host Species	Rabbit
Clonality	Polyclonal
Purification	The antibody was affinity-purified from rabbit antiserum by affinity-chromatography using epitope-specific immunogen.
Applications	WB IHC IF ELISA
Species Reactivity	Hu Ms
Specificity	Phospho-BAM32 (Y139) Polyclonal Antibody detects endogenous levels of BAM32 protein only when phosphorylated at Y139.
Immunogen Type	peptide
Immunogen Description	Synthesized peptide derived from human BAM32 around the phosphorylation site of Y139.
Target Name	BAM32
Modification	Phospho
Other Names	DAPP1; BAM32; HSPC066; Dual adapter for phosphotyrosine and 3-phosphotyrosine and 3-phosphoinositide; hDAPP1; B lymphocyte adapter protein Bam32; B-cell adapter molecule of 32 kDa
Accession No.	Swiss-Prot: Q9UN19NCBI Gene ID: 27071
Uniprot	Q9UN19
GeneID	27071;
Target Species	human
SDS-PAGE MW	32kd
Concentration	1mg/ml
Formulation	Liquid in PBS containing 50% glycerol, 0.5% BSA and 0.02% sodium azide.
Storage	Store at -20°C/1 year

## Application Details

Western blotting: 1/500 - 1/2000

Immunohistochemistry: 1/100 - 1/300

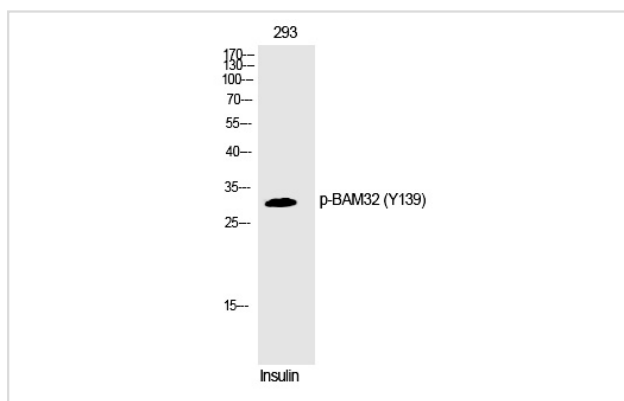
Immunofluorescence: 1/200 - 1/1000

ELISA: 1/5000

Not yet tested in other applications

## Images

Western Blot analysis of 293 cells using Phospho-BAM32 (Y139) Polyclonal Antibody



Note: This product is for in vitro research use only