

GRB10 (Phospho-Tyr67) Polyclonal Antibody

Catalog No: #12275

Package Size: #12275-1 50ul #12275-2 100ul

Orders: order@signalwayantibody.comSupport: tech@signalwayantibody.com

Description

Product Name	GRB10 (Phospho-Tyr67) Polyclonal Antibody
Host Species	Rabbit
Clonality	Polyclonal
Purification	The antibody was affinity-purified from rabbit antiserum by affinity-chromatography using epitope-specific immunogen.
Applications	WB IHC IF ELISA
Species Reactivity	Hu
Specificity	Phospho-GRB10 (Y67) Polyclonal Antibody detects endogenous levels of GRB10 protein only when phosphorylated at Y67.
Immunogen Type	peptide
Immunogen Description	Synthesized peptide derived from human GRB10 around the phosphorylation site of Y67.
Target Name	GRB10
Modification	Phospho
Other Names	GRB10; GRBIR; KIAA0207; Growth factor receptor-bound protein 10; GRB10 adapter protein; Insulin receptor-binding protein Grb-IR
Accession No.	Swiss-Prot: Q13322NCBI Gene ID: 2887
Uniprot	Q13322
GeneID	2887;
Target Species	human
SDS-PAGE MW	67kd
Concentration	1mg/ml
Formulation	Liquid in PBS containing 50% glycerol, 0.5% BSA and 0.02% sodium azide.
Storage	Store at -20°C/1 year

Application Details

Western blotting: 1/500 - 1/2000

Immunohistochemistry: 1/100 - 1/300

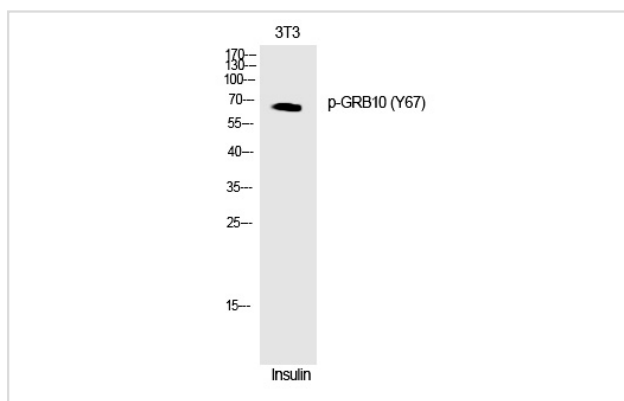
Immunofluorescence: 1/200 - 1/1000

ELISA: 1/20000

Not yet tested in other applications

Images

Western Blot analysis of COLO cells using Phospho-GRB10 (Y67) Polyclonal Antibody



Note: This product is for in vitro research use only