

HSP90 β (Phospho-Ser226) Polyclonal Antibody

Catalog No: #12277

Package Size: #12277-1 50ul #12277-2 100ul

Orders: order@signalwayantibody.comSupport: tech@signalwayantibody.com

Description

Product Name	HSP90 β (Phospho-Ser226) Polyclonal Antibody
Host Species	Rabbit
Clonality	Polyclonal
Purification	The antibody was affinity-purified from rabbit antiserum by affinity-chromatography using epitope-specific immunogen.
Applications	WB IHC IF ELISA
Species Reactivity	Hu Ms Rt
Specificity	Phospho-HSP90 β (S226) Polyclonal Antibody detects endogenous levels of HSP90 β protein only when phosphorylated at S226.
Immunogen Type	peptide
Immunogen Description	Synthesized peptide derived from human HSP90 β around the phosphorylation site of S226.
Target Name	HSP90 β
Modification	Phospho
Other Names	HSP90AB1; HSP90B; HSPC2; HSPCB; Heat shock protein HSP 90-beta; HSP 90; Heat shock 84 kDa; HSP 84; HSP84
Accession No.	Swiss-Prot: P08238NCBI Gene ID: 3326
Uniprot	P08238
GeneID	3326;
Target Species	human
SDS-PAGE MW	83kd
Concentration	1mg/ml
Formulation	Liquid in PBS containing 50% glycerol, 0.5% BSA and 0.02% sodium azide.
Storage	Store at -20°C/1 year

Application Details

Western blotting: 1/500 - 1/2000

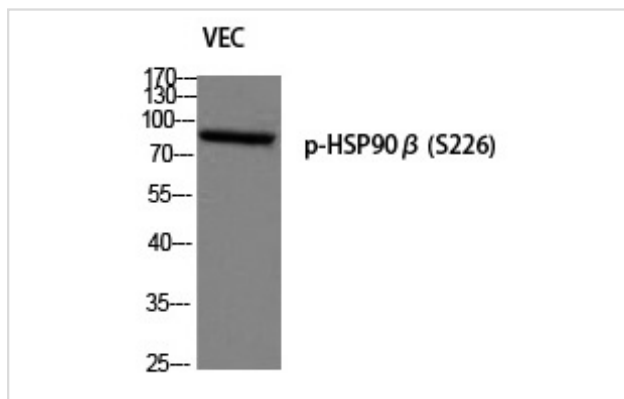
Immunohistochemistry: 1/100 - 1/300

Immunofluorescence: 1/200 - 1/1000

ELISA: 1/10000

Not yet tested in other applications

Images



Western blot analysis of VEC using p-HSP90 β (S226) antibody.

Note: This product is for in vitro research use only