

GABAA R $\beta$ 1 (Phospho-Ser434) Polyclonal Antibody

Catalog No: #12278



Package Size: #12278-1 50ul #12278-2 100ul

Orders: [order@signalwayantibody.com](mailto:order@signalwayantibody.com)Support: [tech@signalwayantibody.com](mailto:tech@signalwayantibody.com)

## Description

Product Name	GABAA R $\beta$ 1 (Phospho-Ser434) Polyclonal Antibody
Host Species	Rabbit
Clonality	Polyclonal
Purification	The antibody was affinity-purified from rabbit antiserum by affinity-chromatography using epitope-specific immunogen.
Applications	WB IHC ELISA
Species Reactivity	Hu Ms Rt Mk
Specificity	Phospho-GABAA R $\beta$ 1 (S434) Polyclonal Antibody detects endogenous levels of GABAA R $\beta$ 1 protein only when phosphorylated at S434.
Immunogen Type	peptide
Immunogen Description	Synthesized peptide derived from human GABAA R $\beta$ 1 around the phosphorylation site of S434.
Target Name	GABAA R $\beta$ 1
Modification	Phospho
Other Names	GABRB1; Gamma-aminobutyric acid receptor subunit beta-1; GABA(A) receptor subunit beta-1
Accession No.	Swiss-Prot: P18505NCBI Gene ID: 2560
Uniprot	P18505
GeneID	2560;
Target Species	human
SDS-PAGE MW	55kd
Concentration	1mg/ml
Formulation	Liquid in PBS containing 50% glycerol, 0.5% BSA and 0.02% sodium azide.
Storage	Store at -20°C/1 year

## Application Details

Western blotting: 1/500 - 1/2000

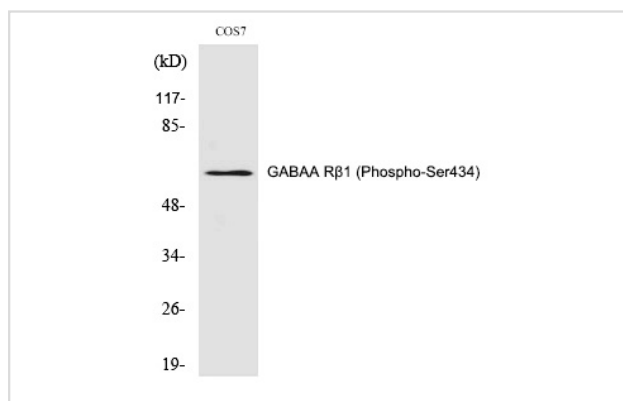
Immunohistochemistry: 1/100 - 1/300

ELISA: 1/40000

Not yet tested in other applications

## Images

Western Blot analysis of COS7 cells using Phospho-GABAA R $\beta$ 1 (S434) Polyclonal Antibody



Note: This product is for in vitro research use only