

## SH-PTP2 (Phospho-Tyr580) Polyclonal Antibody

Catalog No: #12281



Package Size: #12281-1 50ul #12281-2 100ul

Orders: [order@signalwayantibody.com](mailto:order@signalwayantibody.com)Support: [tech@signalwayantibody.com](mailto:tech@signalwayantibody.com)

## Description

Product Name	SH-PTP2 (Phospho-Tyr580) Polyclonal Antibody
Host Species	Rabbit
Clonality	Polyclonal
Purification	The antibody was affinity-purified from rabbit antiserum by affinity-chromatography using epitope-specific immunogen.
Applications	WB IHC ELISA
Species Reactivity	Hu Ms Rt
Specificity	Phospho-SH-PTP2 (Y580) Polyclonal Antibody detects endogenous levels of SH-PTP2 protein only when phosphorylated at Y580.
Immunogen Type	peptide
Immunogen Description	Synthesized peptide derived from human SH-PTP2 around the phosphorylation site of Y580.
Target Name	SH-PTP2
Modification	Phospho
Other Names	PTPN11; PTP2C; SHPTP2; Tyrosine-protein phosphatase non-receptor type 11; Protein-tyrosine phosphatase 1D; PTP-1D; Protein-tyrosine phosphatase 2C; PTP-2C; SH-PTP2; SHP-2; Shp2; SH-PTP3
Accession No.	Swiss-Prot: Q06124NCBI Gene ID: 5781
Uniprot	Q06124
GeneID	5781;
Target Species	human
SDS-PAGE MW	72kd
Concentration	1mg/ml
Formulation	Liquid in PBS containing 50% glycerol, 0.5% BSA and 0.02% sodium azide.
Storage	Store at -20°C/1 year

## Application Details

Western blotting: 1/500 - 1/2000

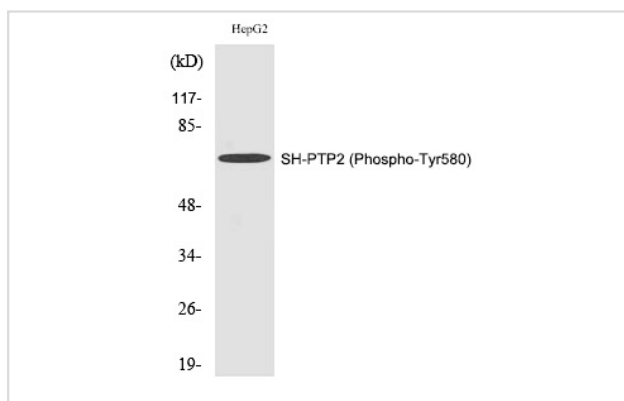
Immunohistochemistry: 1/100 - 1/300

ELISA: 1/40000

Not yet tested in other applications

## Images

Western Blot analysis of HepG2 cells using Phospho-SH-PTP2 (Y580) Polyclonal Antibody



---

Note: This product is for in vitro research use only