

## HSL (Phospho-Ser855) Polyclonal Antibody

Catalog No: #12287

Package Size: #12287-1 50ul #12287-2 100ul

Orders: [order@signalwayantibody.com](mailto:order@signalwayantibody.com)Support: [tech@signalwayantibody.com](mailto:tech@signalwayantibody.com)

## Description

|                       |   |
|-----------------------|---|
| Product Name          | HSL (Phospho-Ser855) Polyclonal Antibody  |
| Host Species          | Rabbit  |
| Clonality             | Polyclonal  |
| Purification          | The antibody was affinity-purified from rabbit antiserum by affinity-chromatography using epitope-specific immunogen. |
| Applications          | WB IHC ELISA  |
| Species Reactivity    | Hu Ms Rt  |
| Specificity           | Phospho-HSL (S855) Polyclonal Antibody detects endogenous levels of HSL protein only when phosphorylated at S855.     |
| Immunogen Type        | peptide   |
| Immunogen Description | Synthesized peptide derived from human HSL around the phosphorylation site of S855.                                   |
| Target Name           | HSL   |
| Modification          | Phospho   |
| Other Names           | LIPE; Hormone-sensitive lipase; HSL   |
| Accession No.         | Swiss-Prot: Q05469NCBI Gene ID: 3991  |
| Uniprot               | Q05469  |
| GeneID                | 3991;   |
| Target Species        | human   |
| SDS-PAGE MW           | 83kd  |
| Concentration         | 1mg/ml  |
| Formulation           | Liquid in PBS containing 50% glycerol, 0.5% BSA and 0.02% sodium azide.   |
| Storage               | Store at -20°C/1 year   |

## Application Details

Western blotting: 1/500 - 1/2000

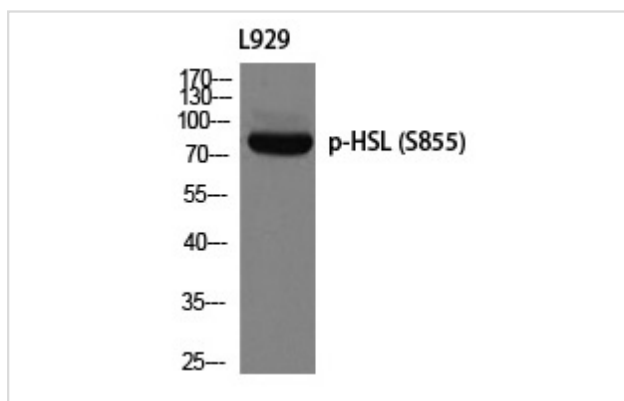
Immunohistochemistry: 1/100 - 1/300

ELISA: 1/20000

Not yet tested in other applications

## Images

Western blot analysis of L929 using p-HSL (S855) antibody.



---

Note: This product is for in vitro research use only