

Ksr-1 (Phospho-Ser392) Polyclonal Antibody

Catalog No: #12288

Package Size: #12288-1 50ul #12288-2 100ul

Orders: order@signalwayantibody.comSupport: tech@signalwayantibody.com

Description

Product Name	Ksr-1 (Phospho-Ser392) Polyclonal Antibody
Host Species	Rabbit
Clonality	Polyclonal
Purification	The antibody was affinity-purified from rabbit antiserum by affinity-chromatography using epitope-specific immunogen.
Applications	WB IHC ELISA
Species Reactivity	Hu Ms
Specificity	Phospho-Ksr-1 (S392) Polyclonal Antibody detects endogenous levels of Ksr-1 protein only when phosphorylated at S392.
Immunogen Type	peptide
Immunogen Description	Synthesized peptide derived from human Ksr-1 around the phosphorylation site of S392.
Target Name	Ksr-1
Modification	Phospho
Other Names	KSR1; KSR; Kinase suppressor of Ras 1
Accession No.	Swiss-Prot: Q8IVT5NCBI Gene ID: 8844
Uniprot	Q8IVT5
GeneID	8844;
Target Species	human
SDS-PAGE MW	115kd
Concentration	1mg/ml
Formulation	Liquid in PBS containing 50% glycerol, 0.5% BSA and 0.02% sodium azide.
Storage	Store at -20°C/1 year

Application Details

Western blotting: 1/500 - 1/2000

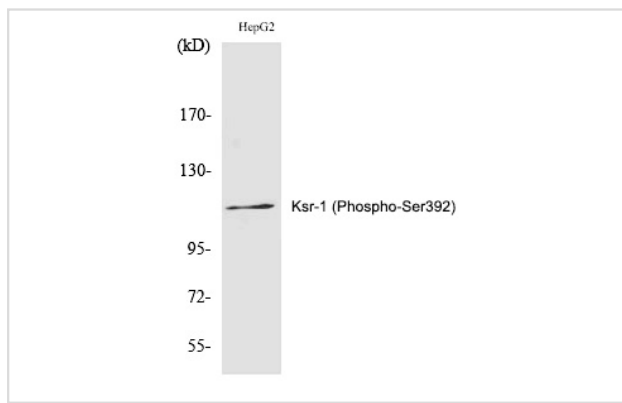
Immunohistochemistry: 1/100 - 1/300

ELISA: 1/20000

Not yet tested in other applications

Images

Western Blot analysis of HepG2 cells using Phospho-Ksr-1 (S392) Polyclonal Antibody



Note: This product is for in vitro research use only