

Lyn (Phospho-Tyr508) Polyclonal Antibody

Catalog No: #12289

Package Size: #12289-1 50ul #12289-2 100ul

Orders: order@signalwayantibody.comSupport: tech@signalwayantibody.com

Description

Product Name	Lyn (Phospho-Tyr508) Polyclonal Antibody
Host Species	Rabbit
Clonality	Polyclonal
Purification	The antibody was affinity-purified from rabbit antiserum by affinity-chromatography using epitope-specific immunogen.
Applications	WB IHC ELISA
Species Reactivity	Hu Ms Rt
Specificity	Phospho-Lyn (Y508) Polyclonal Antibody detects endogenous levels of Lyn protein only when phosphorylated at Y508.
Immunogen Type	peptide
Immunogen Description	Synthesized peptide derived from human Lyn around the phosphorylation site of Y508.
Target Name	Lyn
Modification	Phospho
Other Names	LYN; JTK8; Tyrosine-protein kinase Lyn; Lck/Yes-related novel protein tyrosine kinase; V-yes-1 Yamaguchi sarcoma viral related oncogene homolog; p53Lyn; p56Lyn
Accession No.	Swiss-Prot: P07948NCBI Gene ID: 4067
Uniprot	P07948
GeneID	4067;
Target Species	human
SDS-PAGE MW	58kd
Concentration	1mg/ml
Formulation	Liquid in PBS containing 50% glycerol, 0.5% BSA and 0.02% sodium azide.
Storage	Store at -20°C/1 year

Application Details

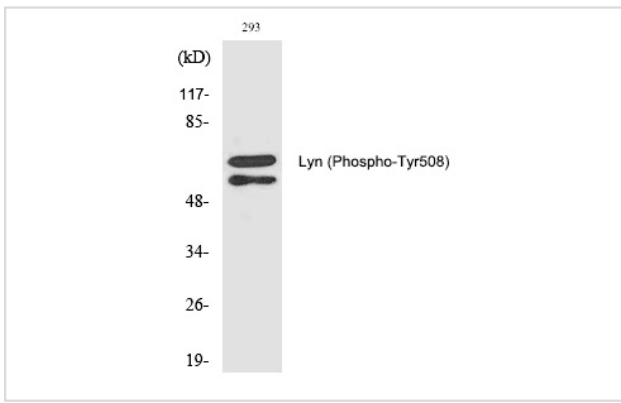
Western blotting: 1/500 - 1/2000

Immunohistochemistry: 1/100 - 1/300

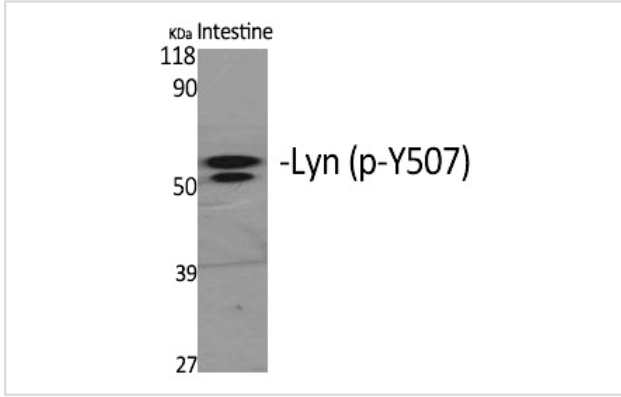
ELISA: 1/10000

Not yet tested in other applications

Images



Western Blot analysis of 293 cells using Phospho-Lyn (Y508) Polyclonal Antibody



Western Blot analysis of MOUSE-INTESTINE cells using Phospho-Lyn (Y508) Polyclonal Antibody

Note: This product is for in vitro research use only