

PLC β 3 (Phospho-Ser1105) Polyclonal Antibody

Catalog No: #12290

Package Size: #12290-1 50ul #12290-2 100ul

Orders: order@signalwayantibody.comSupport: tech@signalwayantibody.com

Description

Product Name	PLC β 3 (Phospho-Ser1105) Polyclonal Antibody
Host Species	Rabbit
Clonality	Polyclonal
Purification	The antibody was affinity-purified from rabbit antiserum by affinity-chromatography using epitope-specific immunogen.
Applications	WB IHC ELISA
Species Reactivity	Hu Ms Rt
Specificity	Phospho-PLC β 3 (S1105) Polyclonal Antibody detects endogenous levels of PLC β 3 protein only when phosphorylated at S1105.
Immunogen Type	peptide
Immunogen Description	Synthesized peptide derived from human PLC β 3 around the phosphorylation site of S1105.
Target Name	PLC β 3
Modification	Phospho
Other Names	PLCB3; 1-phosphatidylinositol 4; 5-bisphosphate phosphodiesterase beta-3; Phosphoinositide phospholipase C-beta-3; Phospholipase C-beta-3; PLC-beta-3
Accession No.	Swiss-Prot: Q01970NCBI Gene ID: 5331
Uniprot	Q01970
GeneID	5331;
Target Species	human
SDS-PAGE MW	160kd
Concentration	1mg/ml
Formulation	Liquid in PBS containing 50% glycerol, 0.5% BSA and 0.02% sodium azide.
Storage	Store at -20°C/1 year

Application Details

Western blotting: 1/500 - 1/2000

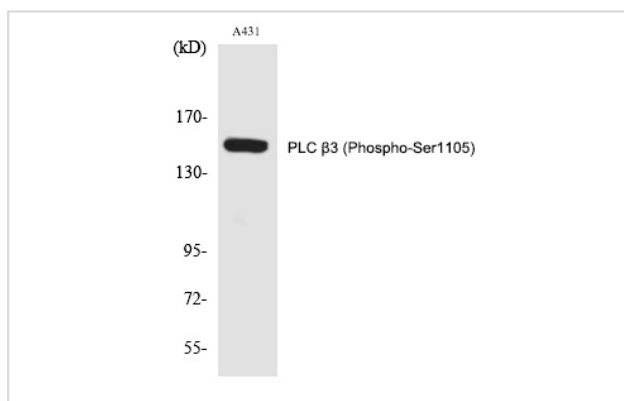
Immunohistochemistry: 1/100 - 1/300

ELISA: 1/10000

Not yet tested in other applications

Images

Western Blot analysis of A431 cells using Phospho-PLC β 3 (S1105) Polyclonal Antibody



Note: This product is for in vitro research use only