

Stat5 (Phospho-Ser726/731) Polyclonal Antibody

Catalog No: #12292



Package Size: #12292-1 50ul #12292-2 100ul

Orders: order@signalwayantibody.comSupport: tech@signalwayantibody.com

Description

Product Name	Stat5 (Phospho-Ser726/731) Polyclonal Antibody
Host Species	Rabbit
Clonality	Polyclonal
Purification	The antibody was affinity-purified from rabbit antiserum by affinity-chromatography using epitope-specific immunogen.
Applications	WB IHC
Species Reactivity	Hu Ms Rt
Specificity	Phospho-Stat5 (S726/731) Polyclonal Antibody detects endogenous levels of Stat5 protein only when phosphorylated at S726/731.
Immunogen Type	peptide
Immunogen Description	Synthesized peptide derived from human Stat5 around the phosphorylation site of S726/731.
Target Name	Stat5
Modification	Phospho
Other Names	STAT5A; STAT5; Signal transducer and activator of transcription 5A; STAT5B; Signal transducer and activator of transcription 5B
Accession No.	Swiss-Prot: P42229/P51692NCBI Gene ID: 6777
Uniprot	P42229
GeneID	6776;
Target Species	human
SDS-PAGE MW	90kd
Concentration	1mg/ml
Formulation	Liquid in PBS containing 50% glycerol, 0.5% BSA and 0.02% sodium azide.
Storage	Store at -20°C/1 year

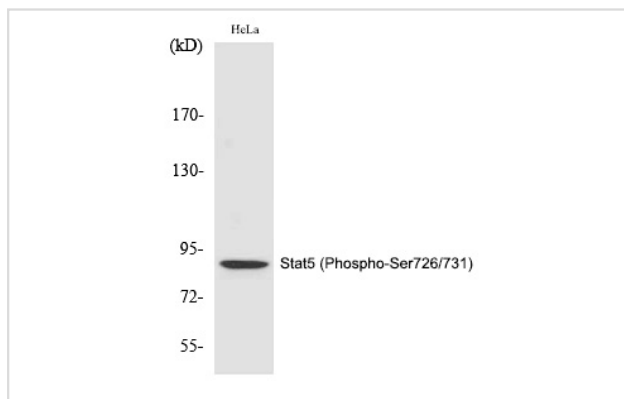
Application Details

Western blotting: 1/500 - 1/2000

Immunohistochemistry: 1/100 - 1/300

Images

Western Blot analysis of HeLa cells using Phospho-Stat5 (S726/731) Polyclonal Antibody



Note: This product is for in vitro research use only