

## WNK1 (Phospho-Thr60) Polyclonal Antibody

Catalog No: #12295

Package Size: #12295-1 50ul #12295-2 100ul

Orders: [order@signalwayantibody.com](mailto:order@signalwayantibody.com)Support: [tech@signalwayantibody.com](mailto:tech@signalwayantibody.com)

## Description

Product Name	WNK1 (Phospho-Thr60) Polyclonal Antibody
Host Species	Rabbit
Clonality	Polyclonal
Purification	The antibody was affinity-purified from rabbit antiserum by affinity-chromatography using epitope-specific immunogen.
Applications	WB IHC ELISA
Species Reactivity	Hu Ms Rt
Specificity	Phospho-WNK1 (T60) Polyclonal Antibody detects endogenous levels of WNK1 protein only when phosphorylated at T60.
Immunogen Type	peptide
Immunogen Description	Synthesized peptide derived from human WNK1 around the phosphorylation site of T60.
Target Name	WNK1
Modification	Phospho
Other Names	WNK1; HSN2; KDP; KIAA0344; PRKWINK1; Serine/threonine-protein kinase WNK1; Erythrocyte 65 kDa protein; p65; Kinase deficient protein; Protein kinase lysine-deficient 1; Protein kinase with no lysine 1; hWNK1
Accession No.	Swiss-Prot: Q9H4A3NCBI Gene ID: 65125
Uniprot	Q9H4A3
GeneID	65125;
Target Species	human
SDS-PAGE MW	230kd
Concentration	1mg/ml
Formulation	Liquid in PBS containing 50% glycerol, 0.5% BSA and 0.02% sodium azide.
Storage	Store at -20°C/1 year

## Application Details

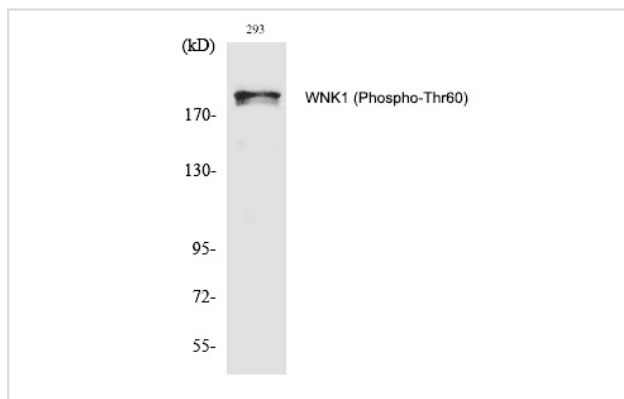
Western blotting: 1/500 - 1/2000

Immunohistochemistry: 1/100 - 1/300

ELISA: 1/5000

Not yet tested in other applications

## Images



Western Blot analysis of 293 cells using Phospho-WNK1 (T60) Polyclonal Antibody

Note: This product is for in vitro research use only