

ACC $\alpha$  (Phospho-Ser80) Polyclonal Antibody

Catalog No: #12296

Package Size: #12296-1 50ul #12296-2 100ul

Orders: [order@signalwayantibody.com](mailto:order@signalwayantibody.com)Support: [tech@signalwayantibody.com](mailto:tech@signalwayantibody.com)

## Description

Product Name	ACC $\alpha$ (Phospho-Ser80) Polyclonal Antibody
Host Species	Rabbit
Clonality	Polyclonal
Purification	The antibody was affinity-purified from rabbit antiserum by affinity-chromatography using epitope-specific immunogen.
Applications	WB IHC ELISA
Species Reactivity	Hu Ms Rt
Specificity	Phospho-ACC $\alpha$ (S80) Polyclonal Antibody detects endogenous levels of ACC $\alpha$ protein only when phosphorylated at S80.
Immunogen Type	peptide
Immunogen Description	Synthesized peptide derived from human ACC $\alpha$ around the phosphorylation site of S80.
Target Name	ACC $\alpha$
Modification	Phospho
Other Names	ACACA; ACAC; ACC1; ACCA; Acetyl-CoA carboxylase 1; ACC1; ACC-alpha
Accession No.	Swiss-Prot: Q13085NCBI Gene ID: 31
Uniprot	Q13085
GeneID	31;
Target Species	human
SDS-PAGE MW	265kd
Concentration	1mg/ml
Formulation	Liquid in PBS containing 50% glycerol, 0.5% BSA and 0.02% sodium azide.
Storage	Store at -20°C/1 year

## Application Details

Western blotting: 1/500 - 1/2000

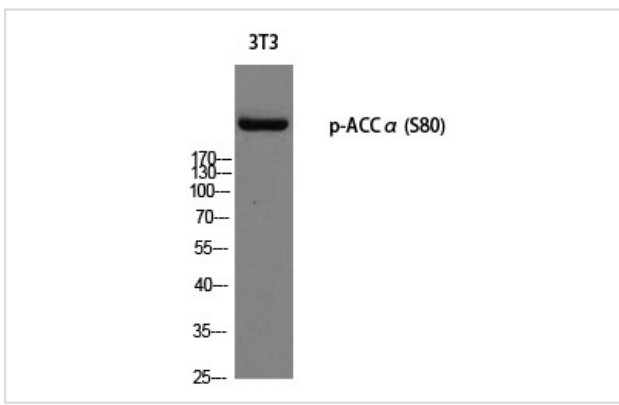
Immunohistochemistry: 1/100 - 1/300

ELISA: 1/10000

Not yet tested in other applications

## Images

Western blot analysis of 3T3 using p-ACC $\alpha$  (S80) antibody.



Note: This product is for in vitro research use only