

Ku-70 (Phospho-Ser5) Polyclonal Antibody

Catalog No: #12300

Package Size: #12300-1 50ul #12300-2 100ul

Orders: order@signalwayantibody.comSupport: tech@signalwayantibody.com

Description

Product Name	Ku-70 (Phospho-Ser5) Polyclonal Antibody
Host Species	Rabbit
Clonality	Polyclonal
Purification	The antibody was affinity-purified from rabbit antiserum by affinity-chromatography using epitope-specific immunogen.
Applications	WB IHC ELISA
Species Reactivity	Hu Ms
Specificity	Phospho-Ku-70 (S5) Polyclonal Antibody detects endogenous levels of Ku-70 protein only when phosphorylated at S5.
Immunogen Type	peptide
Immunogen Description	Synthesized peptide derived from human Ku-70 around the phosphorylation site of S5.
Target Name	Ku-70
Modification	Phospho
Other Names	XRCC6; G22P1; X-ray repair cross-complementing protein 6; 5'-deoxyribose-5-phosphate lyase Ku70; 5'-dRP lyase Ku70; 70 kDa subunit of Ku antigen; ATP-dependent DNA helicase 2 subunit 1; ATP-dependent DNA helicase II 70 kDa subunit; CTC box-
Accession No.	Swiss-Prot: P12956NCBI Gene ID: 2547
Uniprot	P12956
GeneID	2547;
Target Species	human
SDS-PAGE MW	70kd
Concentration	1mg/ml
Formulation	Liquid in PBS containing 50% glycerol, 0.5% BSA and 0.02% sodium azide.
Storage	Store at -20°C/1 year

Application Details

Western blotting: 1/500 - 1/2000

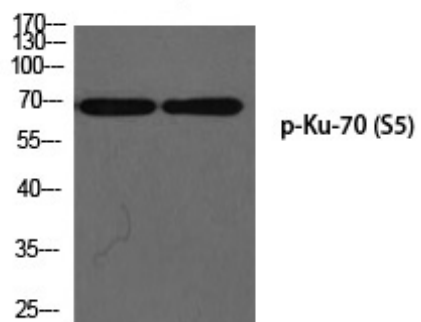
Immunohistochemistry: 1/100 - 1/300

ELISA: 1/5000

Not yet tested in other applications

Images

RAT-kidney HEPG2-UV



Western blot analysis of RAT-kidney HEPG2-UV using p-Ku-70 (S5) antibody.

Note: This product is for in vitro research use only