

## ARK-1 (Phospho-Thr288) Polyclonal Antibody

Catalog No: #12301

Package Size: #12301-1 50ul #12301-2 100ul

Orders: [order@signalwayantibody.com](mailto:order@signalwayantibody.com)Support: [tech@signalwayantibody.com](mailto:tech@signalwayantibody.com)

## Description

Product Name	ARK-1 (Phospho-Thr288) Polyclonal Antibody
Host Species	Rabbit
Clonality	Polyclonal
Purification	The antibody was affinity-purified from rabbit antiserum by affinity-chromatography using epitope-specific immunogen.
Applications	WB IHC ELISA
Species Reactivity	Hu Ms Rt
Specificity	Phospho-ARK-1 (T288) Polyclonal Antibody detects endogenous levels of ARK-1 protein only when phosphorylated at T288.
Immunogen Type	peptide
Immunogen Description	Synthesized peptide derived from human ARK-1 around the phosphorylation site of T288.
Target Name	ARK-1
Modification	Phospho
Other Names	AURKA; AIK; AIRK1; ARK1; AURA; AYK1; BTAK; IAK1; STK15; STK6; Aurora kinase A; Aurora 2; Aurora/IPL1-related kinase 1; ARK-1; Aurora-related kinase 1; hARK1; Breast tumor-amplified kinase; Serine/threonine-protein kinase 15; Serine/threonin
Accession No.	Swiss-Prot: O14965NCBI Gene ID: 6790
Uniprot	O14965
GeneID	6790;
Target Species	human
SDS-PAGE MW	45kd
Concentration	1mg/ml
Formulation	Liquid in PBS containing 50% glycerol, 0.5% BSA and 0.02% sodium azide.
Storage	Store at -20°C/1 year

## Application Details

Western blotting: 1/500 - 1/2000

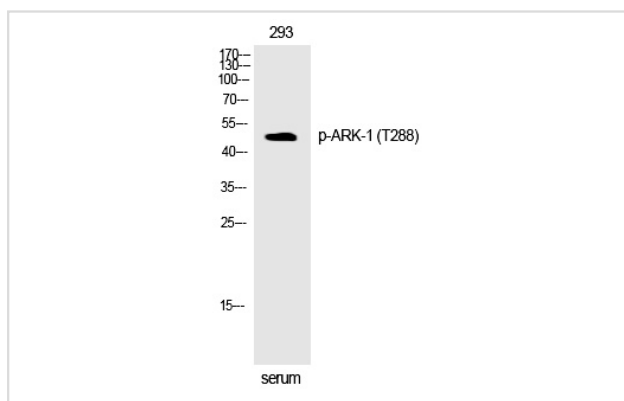
Immunohistochemistry: 1/100 - 1/300

ELISA: 1/5000

Not yet tested in other applications

## Images

Western Blot analysis of 293 cells using Phospho-ARK-1 (T288) Polyclonal Antibody



Note: This product is for in vitro research use only