

## NMDAε2 (Phospho-Tyr1474) Polyclonal Antibody

Catalog No: #12303

Package Size: #12303-1 50ul #12303-2 100ul

Orders: [order@signalwayantibody.com](mailto:order@signalwayantibody.com)Support: [tech@signalwayantibody.com](mailto:tech@signalwayantibody.com)

## Description

Product Name	NMDAε2 (Phospho-Tyr1474) Polyclonal Antibody
Host Species	Rabbit
Clonality	Polyclonal
Purification	The antibody was affinity-purified from rabbit antiserum by affinity-chromatography using epitope-specific immunogen.
Applications	WB IHC ELISA
Species Reactivity	Hu Ms Rt
Specificity	Phospho-NMDAε2 (Y1474) Polyclonal Antibody detects endogenous levels of NMDAε2 protein only when phosphorylated at Y1474.
Immunogen Type	peptide
Immunogen Description	Synthesized peptide derived from human NMDAε2 around the phosphorylation site of Y1474.
Target Name	NMDAε2
Modification	Phospho
Other Names	GRIN2B; NMDAR2B; Glutamate [NMDA] receptor subunit epsilon-2; N-methyl D-aspartate receptor subtype 2B; NMDAR2B; NR2B; N-methyl-D-aspartate receptor subunit 3; NR3; hNR3
Accession No.	Swiss-Prot: Q13224NCBI Gene ID: 2904
Uniprot	Q13224
GeneID	2904;
Target Species	human
SDS-PAGE MW	165kd
Concentration	1mg/ml
Formulation	Liquid in PBS containing 50% glycerol, 0.5% BSA and 0.02% sodium azide.
Storage	Store at -20°C/1 year

## Application Details

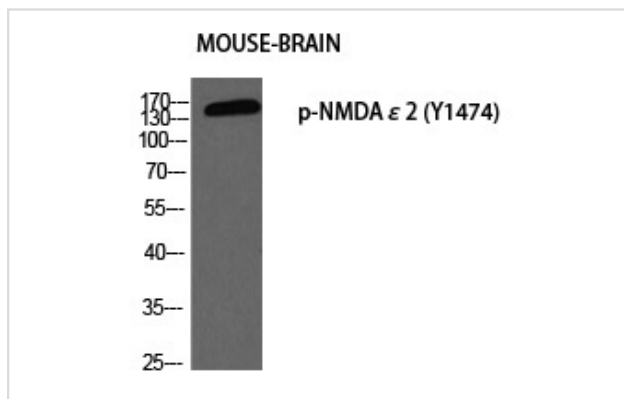
Western blotting: 1/500 - 1/2000

Immunohistochemistry: 1/100 - 1/300

ELISA: 1/5000

Not yet tested in other applications

## Images



Western blot analysis of MOUSE-BRAIN using p-NMDA $\epsilon$ 2 (Y1474) antibody.

---

Note: This product is for in vitro research use only