

## PEA-15 (Phospho-Ser116) Polyclonal Antibody

Catalog No: #12304

Package Size: #12304-1 50ul #12304-2 100ul

Orders: [order@signalwayantibody.com](mailto:order@signalwayantibody.com)Support: [tech@signalwayantibody.com](mailto:tech@signalwayantibody.com)

## Description

Product Name	PEA-15 (Phospho-Ser116) Polyclonal Antibody
Host Species	Rabbit
Clonality	Polyclonal
Purification	The antibody was affinity-purified from rabbit antiserum by affinity-chromatography using epitope-specific immunogen.
Applications	WB IHC ELISA
Species Reactivity	Hu Ms Rt Mk
Specificity	Phospho-PEA-15 (S116) Polyclonal Antibody detects endogenous levels of PEA-15 protein only when phosphorylated at S116.
Immunogen Type	peptide
Immunogen Description	Synthesized peptide derived from human PEA-15 around the phosphorylation site of S116.
Target Name	PEA-15
Modification	Phospho
Other Names	PEA15; Astrocytic phosphoprotein PEA-15; 15 kDa phosphoprotein enriched in astrocytes; Phosphoprotein enriched in diabetes; PED
Accession No.	Swiss-Prot: Q15121NCBI Gene ID: 8682
Uniprot	Q15121
GeneID	8682;
Target Species	human
SDS-PAGE MW	15kd
Concentration	1mg/ml
Formulation	Liquid in PBS containing 50% glycerol, 0.5% BSA and 0.02% sodium azide.
Storage	Store at -20°C/1 year

## Application Details

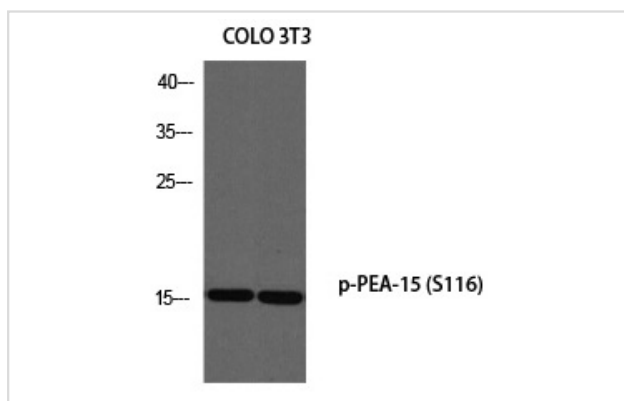
Western blotting: 1/500 - 1/2000

Immunohistochemistry: 1/100 - 1/300

ELISA: 1/5000

Not yet tested in other applications

## Images



Western blot analysis of COLO 3T3 using p-PEA-15 (S116) antibody.

---

Note: This product is for in vitro research use only