

## SMC1 (Phospho-Ser966) Polyclonal Antibody

Catalog No: #12305

Package Size: #12305-1 50ul #12305-2 100ul

Orders: [order@signalwayantibody.com](mailto:order@signalwayantibody.com)Support: [tech@signalwayantibody.com](mailto:tech@signalwayantibody.com)

## Description

Product Name	SMC1 (Phospho-Ser966) Polyclonal Antibody
Host Species	Rabbit
Clonality	Polyclonal
Purification	The antibody was affinity-purified from rabbit antiserum by affinity-chromatography using epitope-specific immunogen.
Applications	WB IHC ELISA
Species Reactivity	Hu Ms Rt
Specificity	Phospho-SMC1 (S966) Polyclonal Antibody detects endogenous levels of SMC1 protein only when phosphorylated at S966.
Immunogen Type	peptide
Immunogen Description	Synthesized peptide derived from human SMC1 around the phosphorylation site of S966.
Target Name	SMC1
Modification	Phospho
Other Names	SMC1A; DXS423E; KIAA0178; SB1.8; SMC1; SMC1L1; Structural maintenance of chromosomes protein 1A; SMC protein 1A; SMC-1-alpha; SMC-1A; Sb1.8
Accession No.	Swiss-Prot: Q14683NCBI Gene ID: 8243
Uniprot	Q14683
GeneID	8243;
Target Species	human
SDS-PAGE MW	160kd
Concentration	1mg/ml
Formulation	Liquid in PBS containing 50% glycerol, 0.5% BSA and 0.02% sodium azide.
Storage	Store at -20°C/1 year

## Application Details

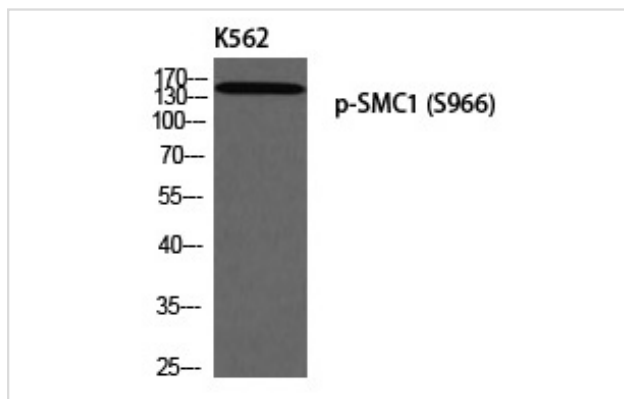
Western blotting: 1/500 - 1/2000

Immunohistochemistry: 1/100 - 1/300

ELISA: 1/10000

Not yet tested in other applications

## Images



Western blot analysis of K562 using p-SMC1 (S966) antibody.

---

Note: This product is for in vitro research use only