

## p23 (Phospho-Ser113) Polyclonal Antibody

Catalog No: #12306

Package Size: #12306-1 50ul #12306-2 100ul

Orders: [order@signalwayantibody.com](mailto:order@signalwayantibody.com)Support: [tech@signalwayantibody.com](mailto:tech@signalwayantibody.com)

## Description

Product Name	p23 (Phospho-Ser113) Polyclonal Antibody
Host Species	Rabbit
Clonality	Polyclonal
Purification	The antibody was affinity-purified from rabbit antiserum by affinity-chromatography using epitope-specific immunogen.
Applications	WB IHC ELISA
Species Reactivity	Hu Ms Rt
Specificity	Phospho-p23 (S113) Polyclonal Antibody detects endogenous levels of p23 protein only when phosphorylated at S113.
Immunogen Type	peptide
Immunogen Description	Synthesized peptide derived from human p23 around the phosphorylation site of S113.
Target Name	p23
Modification	Phospho
Other Names	PTGES3; P23; TEBP; Prostaglandin E synthase 3; Cytosolic prostaglandin E2 synthase; cPGES; Hsp90 co-chaperone; Progesterone receptor complex p23; Telomerase-binding protein p23
Accession No.	Swiss-Prot: Q15185NCBI Gene ID: 10728
Uniprot	Q15185
GeneID	10728;
Target Species	human
SDS-PAGE MW	24kd
Concentration	1mg/ml
Formulation	Liquid in PBS containing 50% glycerol, 0.5% BSA and 0.02% sodium azide.
Storage	Store at -20°C/1 year

## Application Details

Western blotting: 1/500 - 1/2000

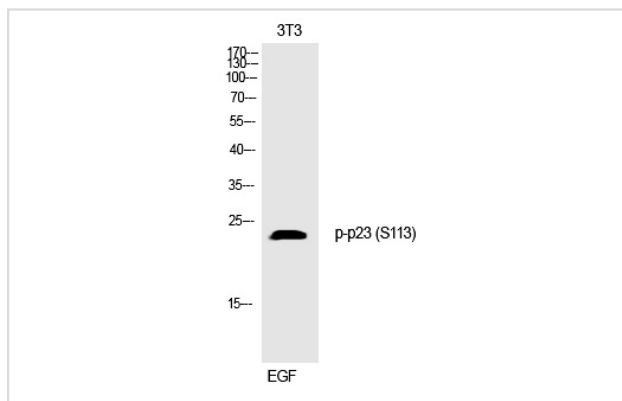
Immunohistochemistry: 1/100 - 1/300

ELISA: 1/10000

Not yet tested in other applications

## Images

Western Blot analysis of 3T3 cells using Phospho-p23 (S113)  
Polyclonal Antibody



Note: This product is for in vitro research use only