

# Troponin I-C (Phospho-Ser22/Ser23) Polyclonal Antibody

Catalog No: #12307

Orders: [order@signalwayantibody.com](mailto:order@signalwayantibody.com)Support: [tech@signalwayantibody.com](mailto:tech@signalwayantibody.com)

Package Size: #12307-1 50ul #12307-2 100ul

## Description

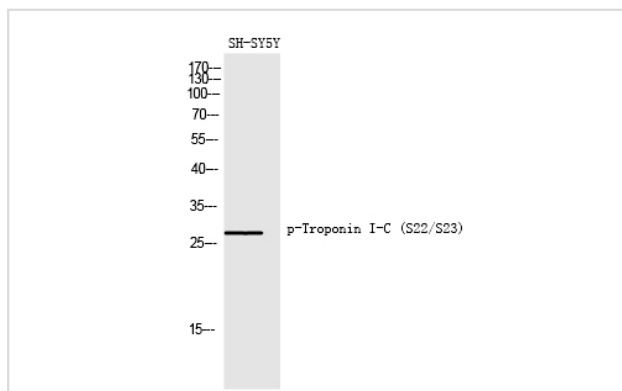
Product Name	Troponin I-C (Phospho-Ser22/Ser23) Polyclonal Antibody
Host Species	Rabbit
Clonality	Polyclonal
Purification	The antibody was affinity-purified from rabbit antiserum by affinity-chromatography using epitope-specific immunogen.
Applications	WB IHC
Species Reactivity	Ms Rt
Specificity	Phospho-Troponin I-C (S22/S23) Polyclonal Antibody detects endogenous levels of Troponin I-C protein only when phosphorylated at S22/S23.
Immunogen Type	peptide
Immunogen Description	Synthesized peptide derived from human Troponin I-C around the phosphorylation site of S22/S23.
Target Name	Troponin I-C
Modification	Phospho
Other Names	TNNI3; TNNC1; Troponin I; cardiac muscle; Cardiac troponin I
Accession No.	Swiss-Prot: NCBI Gene ID:
Target Species	human
SDS-PAGE MW	28kd
Concentration	1mg/ml
Formulation	Liquid in PBS containing 50% glycerol, 0.5% BSA and 0.02% sodium azide.
Storage	Store at -20°C/1 year

## Application Details

Western blotting: 1/500 - 1/2000

Immunohistochemistry: 1/100 - 1/300

## Images



Western Blot analysis of SH-SY5Y cells using Phospho-Troponin I-C (S22/S23) Polyclonal Antibody

---

Note: This product is for in vitro research use only