

Tuberin (Phospho-Ser939) Polyclonal Antibody

Catalog No: #12308



Package Size: #12308-1 50ul #12308-2 100ul

Orders: order@signalwayantibody.comSupport: tech@signalwayantibody.com

Description

Product Name	Tuberin (Phospho-Ser939) Polyclonal Antibody
Host Species	Rabbit
Clonality	Polyclonal
Purification	The antibody was affinity-purified from rabbit antiserum by affinity-chromatography using epitope-specific immunogen.
Applications	WB IHC ELISA
Species Reactivity	Hu Ms Rt
Specificity	Phospho-Tuberin (S939) Polyclonal Antibody detects endogenous levels of Tuberin protein only when phosphorylated at S939.
Immunogen Type	peptide
Immunogen Description	Synthesized peptide derived from human Tuberin around the phosphorylation site of S939.
Target Name	Tuberin
Modification	Phospho
Other Names	TSC2; TSC4; Tuberin; Tuberous sclerosis 2 protein
Accession No.	Swiss-Prot: P49815NCBI Gene ID: 7249
Uniprot	P49815
GeneID	7249;
Target Species	human
SDS-PAGE MW	200kd
Concentration	1mg/ml
Formulation	Liquid in PBS containing 50% glycerol, 0.5% BSA and 0.02% sodium azide.
Storage	Store at -20°C/1 year

Application Details

Western blotting: 1/500 - 1/2000

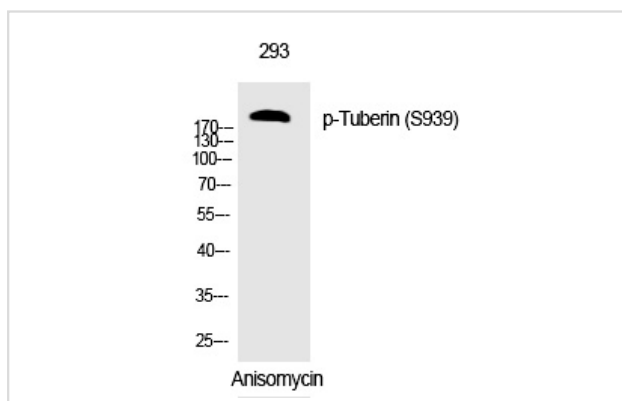
Immunohistochemistry: 1/100 - 1/300

ELISA: 1/10000

Not yet tested in other applications

Images

Western Blot analysis of 293 cells using Phospho-Tuberin (S939) Polyclonal Antibody



Note: This product is for in vitro research use only