

TH (Phospho-Ser8) Polyclonal Antibody

Catalog No: #12309



Package Size: #12309-1 50ul #12309-2 100ul

Orders: order@signalwayantibody.comSupport: tech@signalwayantibody.com

Description

Product Name	TH (Phospho-Ser8) Polyclonal Antibody
Host Species	Rabbit
Clonality	Polyclonal
Purification	The antibody was affinity-purified from rabbit antiserum by affinity-chromatography using epitope-specific immunogen.
Applications	WB IHC ELISA
Species Reactivity	Rt
Specificity	Phospho-TH (S8) Polyclonal Antibody detects endogenous levels of TH protein only when phosphorylated at S8.
Immunogen Type	peptide
Immunogen Description	Synthesized peptide derived from human TH around the phosphorylation site of S8.
Target Name	TH
Modification	Phospho
Other Names	TH; TYH; Tyrosine 3-monooxygenase; Tyrosine 3-hydroxylase; TH
Accession No.	Swiss-Prot: NCBI Gene ID:
Target Species	human
SDS-PAGE MW	62kd
Concentration	1mg/ml
Formulation	Liquid in PBS containing 50% glycerol, 0.5% BSA and 0.02% sodium azide.
Storage	Store at -20°C/1 year

Application Details

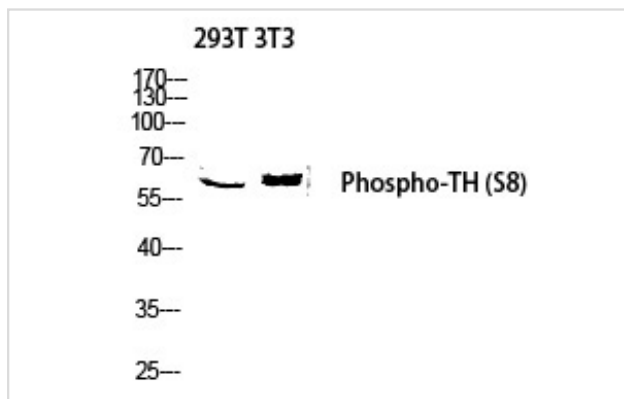
Western blotting: 1/500 - 1/2000

Immunohistochemistry: 1/100 - 1/300

ELISA: 1/5000

Not yet tested in other applications

Images



Western blot analysis of 293T 3T3 lysis using Phospho-TH (S8) antibody.

Note: This product is for in vitro research use only