

NMDA $\zeta$ 1 (Phospho-Ser896) Polyclonal Antibody

Catalog No: #12314

Package Size: #12314-1 50ul #12314-2 100ul

Orders: [order@signalwayantibody.com](mailto:order@signalwayantibody.com)Support: [tech@signalwayantibody.com](mailto:tech@signalwayantibody.com)

## Description

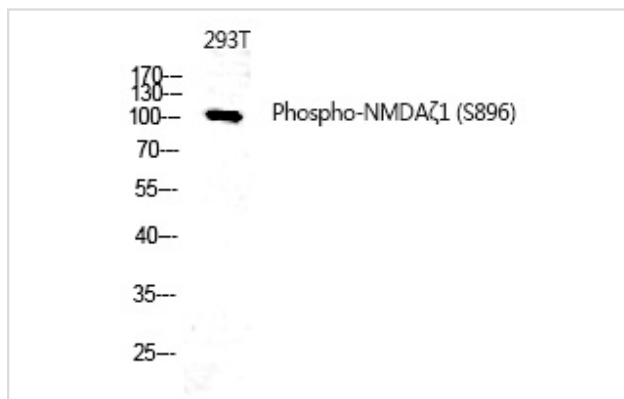
Product Name	NMDA $\zeta$ 1 (Phospho-Ser896) Polyclonal Antibody
Host Species	Rabbit
Clonality	Polyclonal
Purification	The antibody was affinity-purified from rabbit antiserum by affinity-chromatography using epitope-specific immunogen.
Applications	WB IHC
Species Reactivity	Hu Ms Rt
Specificity	Phospho-NMDA $\zeta$ 1 (S896) Polyclonal Antibody detects endogenous levels of NMDA $\zeta$ 1 protein only when phosphorylated at S896.
Immunogen Type	peptide
Immunogen Description	Synthesized peptide derived from human NMDA $\zeta$ 1 around the phosphorylation site of S896.
Target Name	NMDA $\zeta$ 1
Modification	Phospho
Other Names	GRIN1; NMDAR1; Glutamate [NMDA] receptor subunit zeta-1; N-methyl-D-aspartate receptor subunit NR1; NMD-R1
Accession No.	Swiss-Prot: Q05586NCBI Gene ID: 2902
Uniprot	Q05586
GeneID	2902;
Target Species	human
SDS-PAGE MW	105kd
Concentration	1mg/ml
Formulation	Liquid in PBS containing 50% glycerol, 0.5% BSA and 0.02% sodium azide.
Storage	Store at -20°C/1 year

## Application Details

Western blotting: 1/500 - 1/2000

Immunohistochemistry: 1/100 - 1/300

## Images



Western Blot analysis of 293T using Phospho-NMDAζ1 (S896) Polyclonal Antibody.

---

Note: This product is for in vitro research use only