

## p63 (Phospho-Ser455) Polyclonal Antibody

Catalog No: #12315

Package Size: #12315-1 50ul #12315-2 100ul

Orders: [order@signalwayantibody.com](mailto:order@signalwayantibody.com)Support: [tech@signalwayantibody.com](mailto:tech@signalwayantibody.com)

## Description

Product Name	p63 (Phospho-Ser455) Polyclonal Antibody
Host Species	Rabbit
Clonality	Polyclonal
Purification	The antibody was affinity-purified from rabbit antiserum by affinity-chromatography using epitope-specific immunogen.
Applications	WB IHC ELISA
Species Reactivity	Hu
Specificity	Phospho-p63 (S455) Polyclonal Antibody detects endogenous levels of p63 protein only when phosphorylated at S455.
Immunogen Type	peptide
Immunogen Description	Synthesized peptide derived from human p63 around the phosphorylation site of S455.
Target Name	p63
Modification	Phospho
Other Names	TP63; KET; P63; P73H; P73L; TP73L; Tumor protein 63; p63; Chronic ulcerative stomatitis protein; CUSP; Keratinocyte transcription factor KET; Transformation-related protein 63; TP63; Tumor protein p73-like; p73L; p40; p51
Accession No.	Swiss-Prot: Q9H3D4NCBI Gene ID: 8626
Uniprot	Q9H3D4
GeneID	8626;
Target Species	human
SDS-PAGE MW	70kd
Concentration	1mg/ml
Formulation	Liquid in PBS containing 50% glycerol, 0.5% BSA and 0.02% sodium azide.
Storage	Store at -20°C/1 year

## Application Details

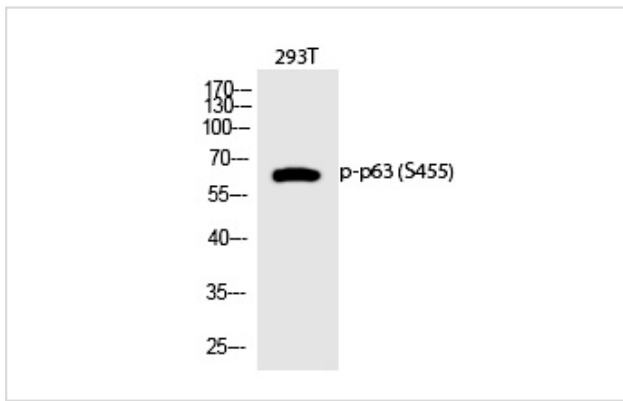
Western blotting: 1/500 - 1/2000

Immunohistochemistry: 1/100 - 1/300

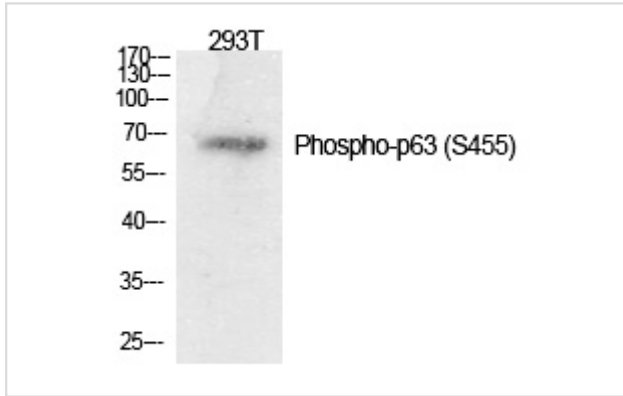
ELISA: 1/20000

Not yet tested in other applications

## Images



Western Blot analysis of 293T cells using Phospho-p63 (S455) Polyclonal Antibody



Western Blot analysis of 293T cells using Phospho-p63 (S455) Polyclonal Antibody

---

Note: This product is for in vitro research use only