

PAK γ (Phospho-Ser20) Polyclonal Antibody

Catalog No: #12316

Package Size: #12316-1 50ul #12316-2 100ul

Orders: order@signalwayantibody.comSupport: tech@signalwayantibody.com

Description

| | |
|-----------------------|---|
| Product Name | PAK γ (Phospho-Ser20) Polyclonal Antibody |
| Host Species | Rabbit |
| Clonality | Polyclonal |
| Purification | The antibody was affinity-purified from rabbit antiserum by affinity-chromatography using epitope-specific immunogen. |
| Applications | WB IHC ELISA |
| Species Reactivity | Hu Ms Rt |
| Specificity | Phospho-PAK γ (S20) Polyclonal Antibody detects endogenous levels of PAK γ protein only when phosphorylated at S20. |
| Immunogen Type | peptide |
| Immunogen Description | Synthesized peptide derived from human PAK γ around the phosphorylation site of S20. |
| Target Name | PAK γ |
| Modification | Phospho |
| Other Names | PAK2; Serine/threonine-protein kinase PAK 2; Gamma-PAK; PAK65; S6/H4 kinase; p21-activated kinase 2; PAK-2; p58 |
| Accession No. | Swiss-Prot: Q13177NCBI Gene ID: 5062 |
| Uniprot | Q13177 |
| GeneID | 5062; |
| Target Species | human |
| SDS-PAGE MW | 62kd |
| Concentration | 1mg/ml |
| Formulation | Liquid in PBS containing 50% glycerol, 0.5% BSA and 0.02% sodium azide. |
| Storage | Store at -20°C/1 year |

Application Details

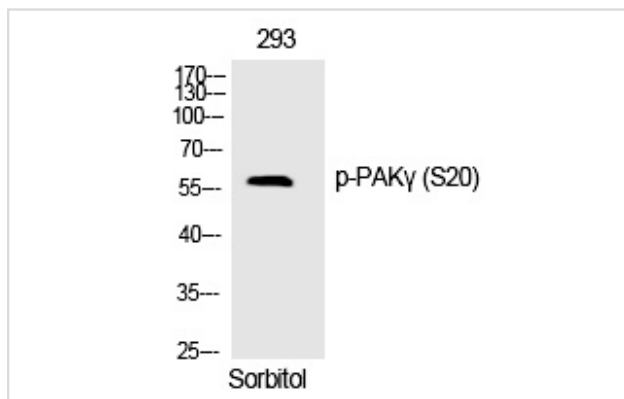
Western blotting: 1/500 - 1/2000

Immunohistochemistry: 1/100 - 1/300

ELISA: 1/40000

Not yet tested in other applications

Images



Western Blot analysis of 293 cells using Phospho-PAK γ (S20) Polyclonal Antibody

Note: This product is for in vitro research use only