

PKC α (Phospho-Thr638) Polyclonal Antibody

Catalog No: #12317

Package Size: #12317-1 50ul #12317-2 100ul

Orders: order@signalwayantibody.comSupport: tech@signalwayantibody.com

Description

Product Name	PKC α (Phospho-Thr638) Polyclonal Antibody
Host Species	Rabbit
Clonality	Polyclonal
Purification	The antibody was affinity-purified from rabbit antiserum by affinity-chromatography using epitope-specific immunogen.
Applications	WB IHC ELISA
Species Reactivity	Hu Ms Rt
Specificity	Phospho-PKC α (T638) Polyclonal Antibody detects endogenous levels of PKC α protein only when phosphorylated at T638.
Immunogen Type	peptide
Immunogen Description	Synthesized peptide derived from human PKC α around the phosphorylation site of T638.
Target Name	PKC α
Modification	Phospho
Other Names	PRKCA; PKCA; PRKACA; Protein kinase C alpha type; PKC-A; PKC-alpha
Accession No.	Swiss-Prot: P17252NCBI Gene ID: 5578
Uniprot	P17252
GeneID	5578;
Target Species	human
SDS-PAGE MW	76kd
Concentration	1mg/ml
Formulation	Liquid in PBS containing 50% glycerol, 0.5% BSA and 0.02% sodium azide.
Storage	Store at -20°C/1 year

Application Details

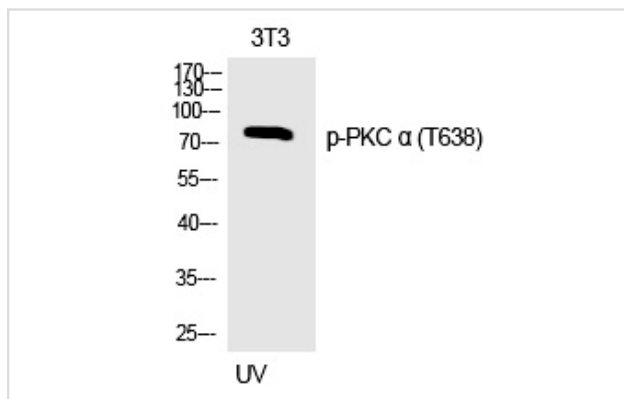
Western blotting: 1/500 - 1/2000

Immunohistochemistry: 1/100 - 1/300

ELISA: 1/20000

Not yet tested in other applications

Images



Western Blot analysis of 3T3 cells using Phospho-PKC α (T638) Polyclonal Antibody

Note: This product is for in vitro research use only