

PLC  $\beta$ 3 (Phospho-Ser537) Polyclonal Antibody

Catalog No: #12318

Package Size: #12318-1 50ul #12318-2 100ul

Orders: order@signalwayantibody.com

Support: tech@signalwayantibody.com

## Description

Product Name	PLC $\beta$ 3 (Phospho-Ser537) Polyclonal Antibody
Host Species	Rabbit
Clonality	Polyclonal
Purification	The antibody was affinity-purified from rabbit antiserum by affinity-chromatography using epitope-specific immunogen.
Applications	WB IHC ELISA
Species Reactivity	Hu Ms Rt
Specificity	Phospho-PLC $\beta$ 3 (S537) Polyclonal Antibody detects endogenous levels of PLC $\beta$ 3 protein only when phosphorylated at S537.
Immunogen Type	peptide
Immunogen Description	Synthesized peptide derived from human PLC $\beta$ 3 around the phosphorylation site of S537.
Target Name	PLC $\beta$ 3
Modification	Phospho
Other Names	PLCB3; 1-phosphatidylinositol 4; 5-bisphosphate phosphodiesterase beta-3; Phosphoinositide phospholipase C-beta-3; Phospholipase C-beta-3; PLC-beta-3
Accession No.	Swiss-Prot: Q01970NCBI Gene ID: 5331
Uniprot	Q01970
GeneID	5331;
Target Species	human
SDS-PAGE MW	150kd
Concentration	1mg/ml
Formulation	Liquid in PBS containing 50% glycerol, 0.5% BSA and 0.02% sodium azide.
Storage	Store at -20°C/1 year

## Application Details

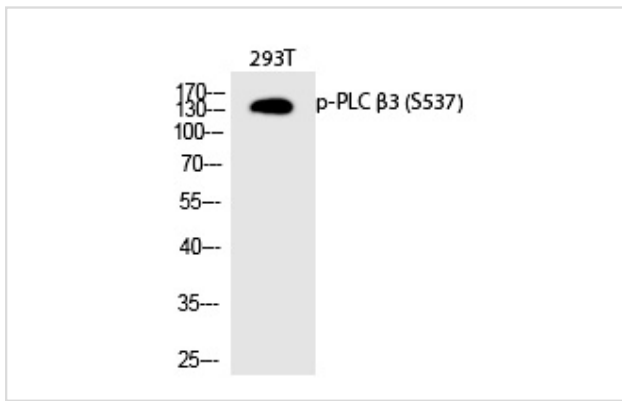
Western blotting: 1/500 - 1/2000

Immunohistochemistry: 1/100 - 1/300

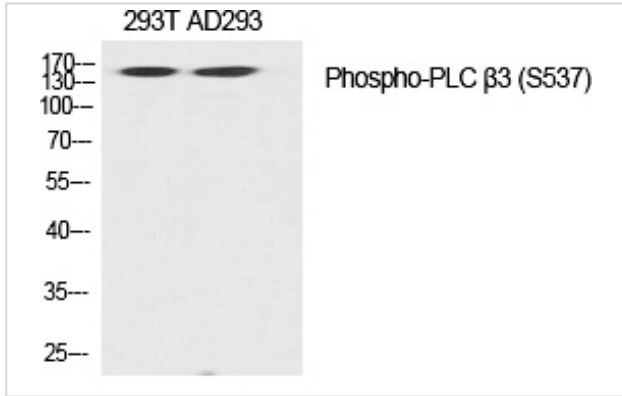
ELISA: 1/10000

Not yet tested in other applications

## Images



Western Blot analysis of 293T cells using Phospho-PLC β3 (S537) Polyclonal Antibody



Western Blot analysis of 293T AD293 cells using Phospho-PLC β3 (S537) Polyclonal Antibody

---

Note: This product is for in vitro research use only