

Raf-B (Phospho-Ser602) Polyclonal Antibody

Catalog No: #12320

Package Size: #12320-1 50ul #12320-2 100ul

Orders: order@signalwayantibody.comSupport: tech@signalwayantibody.com

Description

Product Name	Raf-B (Phospho-Ser602) Polyclonal Antibody
Host Species	Rabbit
Clonality	Polyclonal
Purification	The antibody was affinity-purified from rabbit antiserum by affinity-chromatography using epitope-specific immunogen.
Applications	WB IHC ELISA
Species Reactivity	Hu Ms Rt
Specificity	Phospho-Raf-B (S602) Polyclonal Antibody detects endogenous levels of Raf-B protein only when phosphorylated at S602.
Immunogen Type	peptide
Immunogen Description	Synthesized peptide derived from human Raf-B around the phosphorylation site of S602.
Target Name	Raf-B
Modification	Phospho
Other Names	BRAF; BRAF1; RAFB1; Serine/threonine-protein kinase B-raf; Proto-oncogene B-Raf; p94; v-Raf murine sarcoma viral oncogene homolog B1
Accession No.	Swiss-Prot: P15056NCBI Gene ID: 673
Uniprot	P15056
GeneID	673;
Target Species	human
SDS-PAGE MW	86kd
Concentration	1mg/ml
Formulation	Liquid in PBS containing 50% glycerol, 0.5% BSA and 0.02% sodium azide.
Storage	Store at -20°C/1 year

Application Details

Western blotting: 1/500 - 1/2000

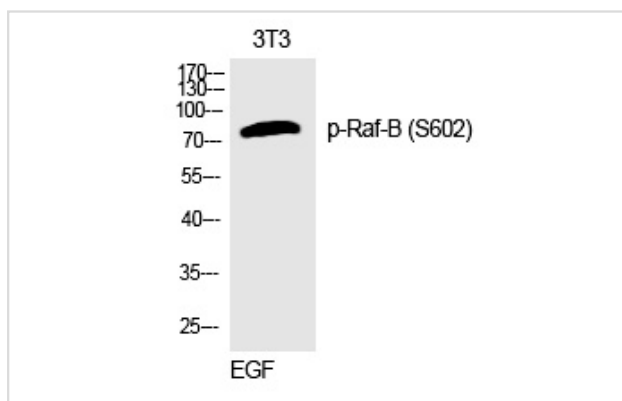
Immunohistochemistry: 1/100 - 1/300

ELISA: 1/20000

Not yet tested in other applications

Images

Western Blot analysis of 3T3 cells using Phospho-Raf-B (S602) Polyclonal Antibody



Note: This product is for in vitro research use only