

## PKD1 (Phospho-Ser205) Polyclonal Antibody

Catalog No: #12323

Package Size: #12323-1 50ul #12323-2 100ul

Orders: [order@signalwayantibody.com](mailto:order@signalwayantibody.com)Support: [tech@signalwayantibody.com](mailto:tech@signalwayantibody.com)

## Description

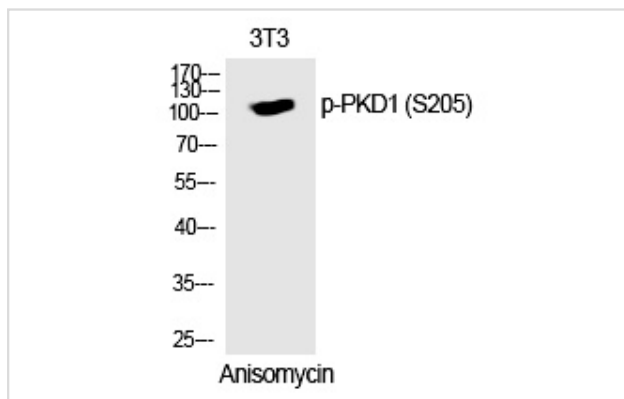
Product Name	PKD1 (Phospho-Ser205) Polyclonal Antibody
Host Species	Rabbit
Clonality	Polyclonal
Purification	The antibody was affinity-purified from rabbit antiserum by affinity-chromatography using epitope-specific immunogen.
Applications	WB IHC
Species Reactivity	Hu Ms Rt
Specificity	Phospho-PKD1 (S205) Polyclonal Antibody detects endogenous levels of PKD1 protein only when phosphorylated at S205.
Immunogen Type	peptide
Immunogen Description	Synthesized peptide derived from human PKD1 around the phosphorylation site of S205.
Target Name	PKD1
Modification	Phospho
Other Names	PRKD1; PKD; PKD1; PRKCM; Serine/threonine-protein kinase D1; Protein kinase C mu type; Protein kinase D; nPKC-D1; nPKC-mu
Accession No.	Swiss-Prot: Q15139NCBI Gene ID: 5587
Uniprot	Q15139
GeneID	5587;
Target Species	human
SDS-PAGE MW	110kd
Concentration	1mg/ml
Formulation	Liquid in PBS containing 50% glycerol, 0.5% BSA and 0.02% sodium azide.
Storage	Store at -20°C/1 year

## Application Details

Western blotting: 1/500 - 1/2000

Immunohistochemistry: 1/100 - 1/300

## Images



Western Blot analysis of 3T3 cells using Phospho-PKD1 (S205) Polyclonal Antibody

---

Note: This product is for in vitro research use only