

Caspase-3 (Phospho-Ser150) Polyclonal Antibody

Catalog No: #12324

Package Size: #12324-1 50ul #12324-2 100ul

Orders: order@signalwayantibody.comSupport: tech@signalwayantibody.com

Description

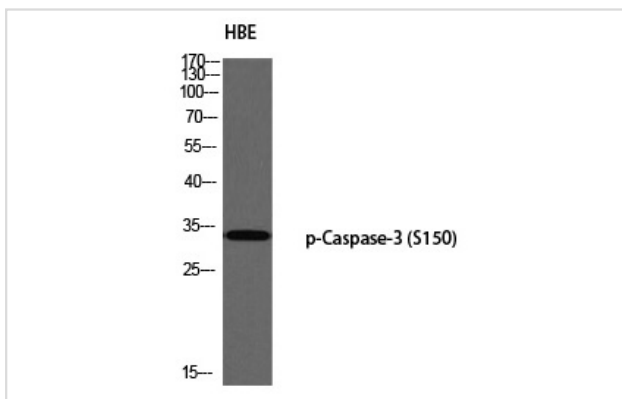
Product Name	Caspase-3 (Phospho-Ser150) Polyclonal Antibody
Host Species	Rabbit
Clonality	Polyclonal
Purification	The antibody was affinity-purified from rabbit antiserum by affinity-chromatography using epitope-specific immunogen.
Applications	WB IHC
Species Reactivity	Hu Ms Rt
Specificity	Phospho-Caspase-3 (S150) Polyclonal Antibody detects endogenous levels of Caspase-3 protein only when phosphorylated at S150.
Immunogen Type	peptide
Immunogen Description	Synthesized peptide derived from human Caspase-3 around the phosphorylation site of S150.
Target Name	Caspase-3
Modification	Phospho
Other Names	CASP3; CPP32; Caspase-3; CASP-3; Apopain; Cysteine protease CPP32; CPP-32; Protein Yama; SREBP cleavage activity 1; SCA-1
Accession No.	Swiss-Prot: P42574NCBI Gene ID: 836
Uniprot	P42574
GeneID	836;
Target Species	human
SDS-PAGE MW	34kd
Concentration	1mg/ml
Formulation	Liquid in PBS containing 50% glycerol, 0.5% BSA and 0.02% sodium azide.
Storage	Store at -20°C/1 year

Application Details

Western blotting: 1/500 - 1/2000

Immunohistochemistry: 1/100 - 1/300

Images



Western blot analysis of HBE using p-Caspase-3 (S150) antibody.

Note: This product is for in vitro research use only