

# Casein Kinase II $\beta$ (Phospho-Ser209) Polyclonal Antibody

Catalog No: #12326

Orders: [order@signalwayantibody.com](mailto:order@signalwayantibody.com)

Package Size: #12326-1 50ul #12326-2 100ul

Support: [tech@signalwayantibody.com](mailto:tech@signalwayantibody.com)

## Description

Product Name	Casein Kinase II $\beta$ (Phospho-Ser209) Polyclonal Antibody
Host Species	Rabbit
Clonality	Polyclonal
Purification	The antibody was affinity-purified from rabbit antiserum by affinity-chromatography using epitope-specific immunogen.
Applications	WB IHC ELISA
Species Reactivity	Hu Ms Rt
Specificity	Phospho-Casein Kinase II $\beta$ (S209) Polyclonal Antibody detects endogenous levels of Casein Kinase II $\beta$ protein only when phosphorylated at S209.
Immunogen Type	peptide
Immunogen Description	Synthesized peptide derived from human Casein Kinase II $\beta$ around the phosphorylation site of S209.
Target Name	Casein Kinase II $\beta$
Modification	Phospho
Other Names	CSNK2B; CK2N; G5A; Casein kinase II subunit beta; CK II beta; Phosvitin; Protein G5a
Accession No.	Swiss-Prot: P67870NCBI Gene ID: 1460
Uniprot	P67870
GeneID	1460;
Target Species	human
SDS-PAGE MW	25kd
Concentration	1mg/ml
Formulation	Liquid in PBS containing 50% glycerol, 0.5% BSA and 0.02% sodium azide.
Storage	Store at -20°C/1 year

## Application Details

Western blotting: 1/500 - 1/2000

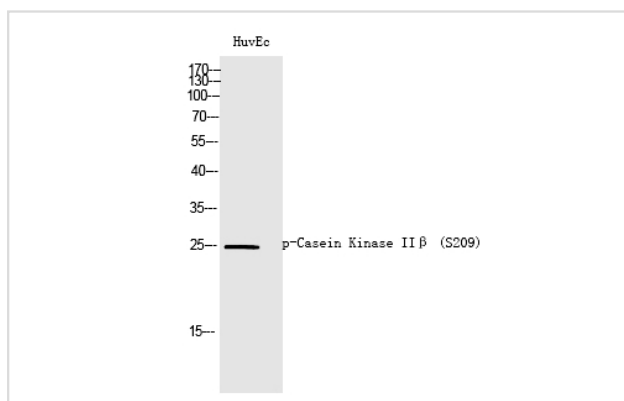
Immunohistochemistry: 1/100 - 1/300

ELISA: 1/40000

Not yet tested in other applications

## Images

Western Blot analysis of HuvEc cells using Phospho-Casein Kinase II $\beta$  (S209) Polyclonal Antibody



Note: This product is for in vitro research use only