

Integrin β 4 (Phospho-Tyr1510) Polyclonal Antibody

Catalog No: #12330



Package Size: #12330-1 50ul #12330-2 100ul

Orders: order@signalwayantibody.comSupport: tech@signalwayantibody.com

Description

Product Name	Integrin β 4 (Phospho-Tyr1510) Polyclonal Antibody
Host Species	Rabbit
Clonality	Polyclonal
Purification	The antibody was affinity-purified from rabbit antiserum by affinity-chromatography using epitope-specific immunogen.
Applications	WB IHC ELISA
Species Reactivity	Hu Ms Rt
Specificity	Phospho-Integrin β 4 (Y1510) Polyclonal Antibody detects endogenous levels of Integrin β 4 protein only when phosphorylated at Y1510.
Immunogen Type	peptide
Immunogen Description	Synthesized peptide derived from human Integrin β 4 around the phosphorylation site of Y1510.
Target Name	Integrin β 4
Modification	Phospho
Other Names	ITGB4; Integrin beta-4; GP150; CD antigen CD104
Accession No.	Swiss-Prot: P16144NCBI Gene ID: 3691
Uniprot	P16144
GeneID	3691;
Target Species	human
SDS-PAGE MW	202kd
Concentration	1mg/ml
Formulation	Liquid in PBS containing 50% glycerol, 0.5% BSA and 0.02% sodium azide.
Storage	Store at -20°C/1 year

Application Details

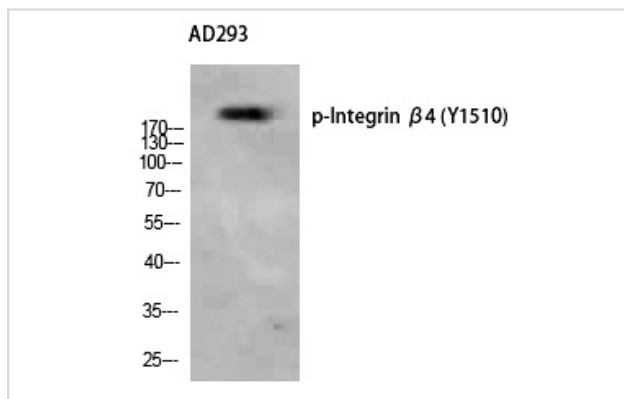
Western blotting: 1/500 - 1/2000

Immunohistochemistry: 1/100 - 1/300

ELISA: 1/10000

Not yet tested in other applications

Images



Western Blot analysis of AD293 using Phospho-Integrin β 4 (Y1510) Polyclonal Antibody.

Note: This product is for in vitro research use only