

Per2 (Phospho-Ser662) Polyclonal Antibody

Catalog No: #12332

Package Size: #12332-1 50ul #12332-2 100ul

Orders: order@signalwayantibody.comSupport: tech@signalwayantibody.com

Description

Product Name	Per2 (Phospho-Ser662) Polyclonal Antibody
Host Species	Rabbit
Clonality	Polyclonal
Purification	The antibody was affinity-purified from rabbit antiserum by affinity-chromatography using epitope-specific immunogen.
Applications	WB IHC ELISA
Species Reactivity	Hu Ms
Specificity	Phospho-Per2 (S662) Polyclonal Antibody detects endogenous levels of Per2 protein only when phosphorylated at S662.
Immunogen Type	peptide
Immunogen Description	Synthesized peptide derived from human Per2 around the phosphorylation site of S662.
Target Name	Per2
Modification	Phospho
Other Names	PER2; KIAA0347; Period circadian protein homolog 2; hPER2; Circadian clock protein PERIOD 2
Accession No.	Swiss-Prot: O15055NCBI Gene ID: 8864
Uniprot	O15055
GeneID	8864;
Target Species	human
SDS-PAGE MW	120kd
Concentration	1mg/ml
Formulation	Liquid in PBS containing 50% glycerol, 0.5% BSA and 0.02% sodium azide.
Storage	Store at -20°C/1 year

Application Details

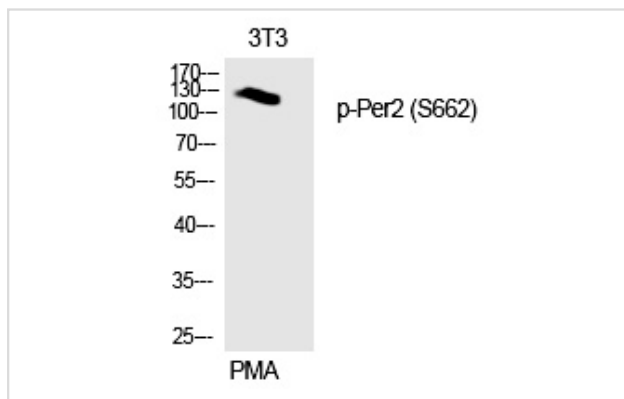
Western blotting: 1/500 - 1/2000

Immunohistochemistry: 1/100 - 1/300

ELISA: 1/5000

Not yet tested in other applications

Images



Western Blot analysis of 3T3 cells using Phospho-Per2 (S662) Polyclonal Antibody

Note: This product is for in vitro research use only