

## NF2 (Phospho-Ser10) Polyclonal Antibody

Catalog No: #12334

Package Size: #12334-1 50ul #12334-2 100ul

Orders: [order@signalwayantibody.com](mailto:order@signalwayantibody.com)Support: [tech@signalwayantibody.com](mailto:tech@signalwayantibody.com)

## Description

Product Name	NF2 (Phospho-Ser10) Polyclonal Antibody
Host Species	Rabbit
Clonality	Polyclonal
Purification	The antibody was affinity-purified from rabbit antiserum by affinity-chromatography using epitope-specific immunogen.
Applications	WB IHC ELISA
Species Reactivity	Hu Ms Rt
Specificity	Phospho-NF2 (S10) Polyclonal Antibody detects endogenous levels of NF2 protein only when phosphorylated at S10.
Immunogen Type	peptide
Immunogen Description	Synthesized peptide derived from human NF2 around the phosphorylation site of S10.
Target Name	NF2
Modification	Phospho
Other Names	NF2; SCH; Merlin; Moesin-ezrin-radixin-like protein; Neurofibromin-2; Schwannomerlin; Schwannomin
Accession No.	Swiss-Prot: P35240NCBI Gene ID: 4771
Uniprot	P35240
GeneID	4771;
Target Species	human
SDS-PAGE MW	65kd
Concentration	1mg/ml
Formulation	Liquid in PBS containing 50% glycerol, 0.5% BSA and 0.02% sodium azide.
Storage	Store at -20°C/1 year

## Application Details

Western blotting: 1/500 - 1/2000

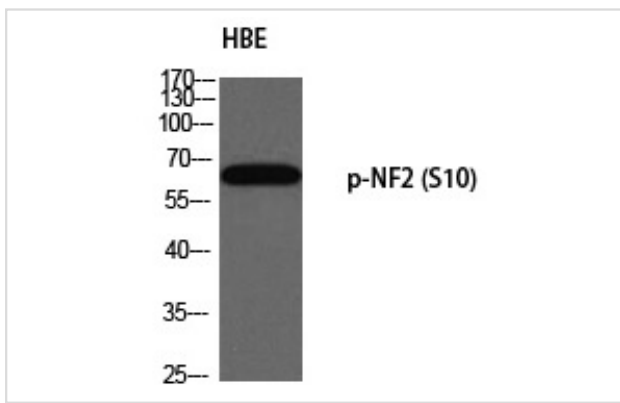
Immunohistochemistry: 1/100 - 1/300

ELISA: 1/5000

Not yet tested in other applications

## Images

Western blot analysis of HBE using p-NF2 (S10) antibody.



Note: This product is for in vitro research use only