

# MEK Kinase-1 (Phospho-Thr1402) Polyclonal Antibody

Catalog No: #12336

Orders: [order@signalwayantibody.com](mailto:order@signalwayantibody.com)

Package Size: #12336-1 50ul #12336-2 100ul

Support: [tech@signalwayantibody.com](mailto:tech@signalwayantibody.com)

## Description

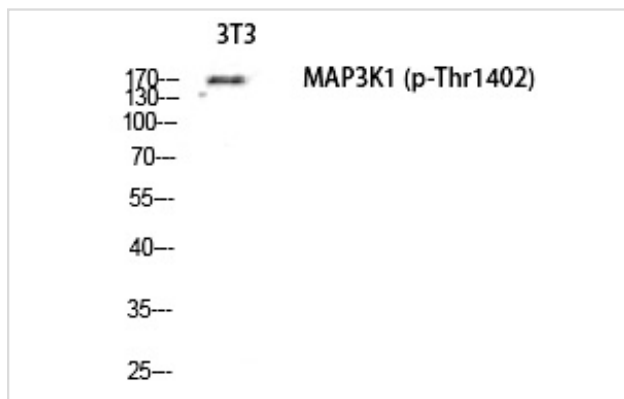
Product Name	MEK Kinase-1 (Phospho-Thr1402) Polyclonal Antibody
Host Species	Rabbit
Clonality	Polyclonal
Purification	The antibody was affinity-purified from rabbit antiserum by affinity-chromatography using epitope-specific immunogen.
Applications	WB IHC
Species Reactivity	Hu Ms Rt
Specificity	Phospho-MEK Kinase-1 (T1402) Polyclonal Antibody detects endogenous levels of MEK Kinase-1 protein only when phosphorylated at T1402.
Immunogen Type	peptide
Immunogen Description	Synthesized peptide derived from human MEK Kinase-1 around the phosphorylation site of T1402.
Target Name	MEK Kinase-1
Modification	Phospho
Other Names	MAP3K1; MAPKKK1; MEKK; MEKK1; Mitogen-activated protein kinase kinase kinase 1; MAPK/ERK kinase kinase 1; MEK kinase 1; MEKK 1
Accession No.	Swiss-Prot: Q13233NCBI Gene ID: 4214
Uniprot	Q13233
GeneID	4214;
Target Species	human
SDS-PAGE MW	130kd
Concentration	1mg/ml
Formulation	Liquid in PBS containing 50% glycerol, 0.5% BSA and 0.02% sodium azide.
Storage	Store at -20°C/1 year

## Application Details

Western blotting: 1/500 - 1/2000

Immunohistochemistry: 1/100 - 1/300

## Images



Western Blot analysis of NIH-3T3 cells using Phospho-MEK Kinase-1 (T1402) Polyclonal Antibody

---

Note: This product is for in vitro research use only