

Selenophosphate synthetase 1 antibody

Catalog No: #22549

Orders: order@signalwayantibody.com

Support: tech@signalwayantibody.com

Description

Product Name	Selenophosphate synthetase 1 antibody
Host Species	Rabbit
Clonality	Polyclonal
Purification	Purified by antigen-affinity chromatography.
Applications	WB IF
Species Reactivity	Hu
Immunogen Type	Recombinant protein
Immunogen Description	Recombinant protein fragment contain a sequence corresponding to a region within amino acids 1 and 174 of Selenophosphate synthetase 1
Target Name	Selenophosphate synthetase 1
Accession No.	Swiss-Prot:P49903Gene ID:22929
Uniprot	P49903
GeneID	22929;
Concentration	0.9mg/ml
Formulation	Supplied in 0.1M Tris-buffered saline with 10% Glycerol (pH7.0). 0.01% Thimerosal was added as a preservative.
Storage	Store at -20°C for long term preservation (recommended). Store at 4°C for short term use.

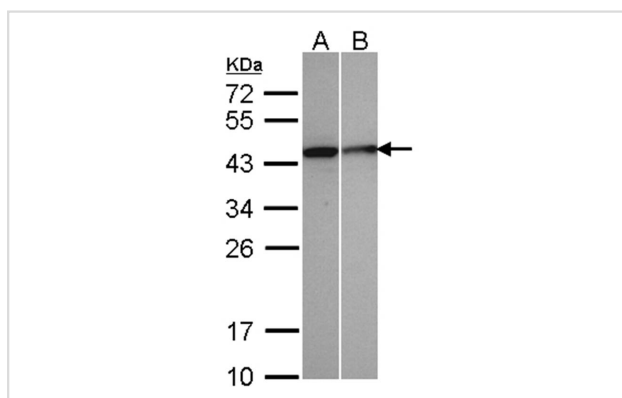
Application Details

Predicted MW: 43kd

Western blotting: 1:500-1:3000

Immunofluorescence: 1:100-1:200

Images



Sample(30 ug of whole cell lysate)

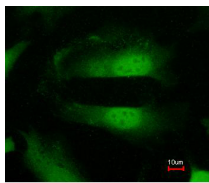
A: A431

B: MOLT4

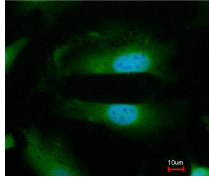
12% SDS PAGE

Primary antibody diluted at 1: 500

Immunofluorescence analysis of paraformaldehyde-fixed HeLa, using Selenophosphate synthetase 1 antibody at 1: 200 dilution.



Merged with DNA probe



Background

This protein encodes an enzyme that synthesizes selenophosphate from selenide and ATP. Selenophosphate is the selenium donor used to synthesize selenocysteine, which is co-translationally incorporated into selenoproteins at in-frame UGA codons. [provided by RefSeq]

Note: This product is for in vitro research use only