

## Tak1 (Phospho-Ser439) Polyclonal Antibody

Catalog No: #12337

Package Size: #12337-1 50ul #12337-2 100ul

Orders: [order@signalwayantibody.com](mailto:order@signalwayantibody.com)Support: [tech@signalwayantibody.com](mailto:tech@signalwayantibody.com)

## Description

Product Name	Tak1 (Phospho-Ser439) Polyclonal Antibody
Host Species	Rabbit
Clonality	Polyclonal
Purification	The antibody was affinity-purified from rabbit antiserum by affinity-chromatography using epitope-specific immunogen.
Applications	WB IHC ELISA
Species Reactivity	Hu Ms Rt
Specificity	Phospho-Tak1 (S439) Polyclonal Antibody detects endogenous levels of Tak1 protein only when phosphorylated at S439.
Immunogen Type	peptide
Immunogen Description	Synthesized peptide derived from human Tak1 around the phosphorylation site of S439.
Target Name	Tak1
Modification	Phospho
Other Names	MAP3K7; TAK1; Mitogen-activated protein kinase kinase kinase 7; Transforming growth factor-beta-activated kinase 1; TGF-beta-activated kinase 1
Accession No.	Swiss-Prot: O43318NCBI Gene ID: 6885
Uniprot	O43318
GeneID	6885;
Target Species	human
SDS-PAGE MW	67kd
Concentration	1mg/ml
Formulation	Liquid in PBS containing 50% glycerol, 0.5% BSA and 0.02% sodium azide.
Storage	Store at -20°C/1 year

## Application Details

Western blotting: 1/500 - 1/2000

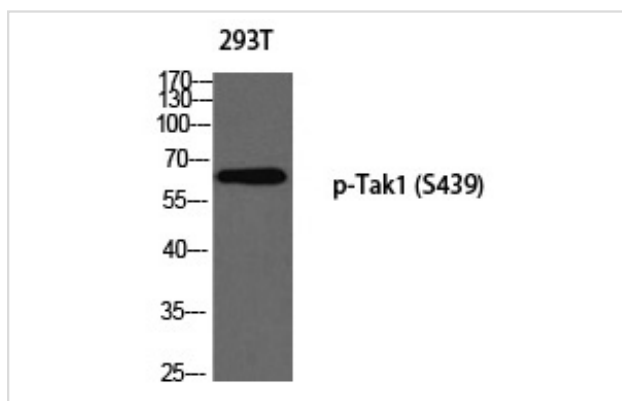
Immunohistochemistry: 1/100 - 1/300

ELISA: 1/5000

Not yet tested in other applications

## Images

Western blot analysis of 293T using p-Tak1 (S439) antibody.



Note: This product is for in vitro research use only