

p16 (Phospho-Ser152) Polyclonal Antibody

Catalog No: #12343

Package Size: #12343-1 50ul #12343-2 100ul

Orders: order@signalwayantibody.comSupport: tech@signalwayantibody.com

Description

Product Name	p16 (Phospho-Ser152) Polyclonal Antibody
Host Species	Rabbit
Clonality	Polyclonal
Purification	The antibody was affinity-purified from rabbit antiserum by affinity-chromatography using epitope-specific immunogen.
Applications	WB IHC ELISA
Species Reactivity	Hu
Specificity	Phospho-p16 (S152) Polyclonal Antibody detects endogenous levels of p16 protein only when phosphorylated at S152.
Immunogen Description	Synthesized peptide derived from human p16 around the phosphorylation site of S152.
Target Name	p16
Modification	Phospho
Other Names	CDKN2A; CDKN2; MTS1; Cyclin-dependent kinase inhibitor 2A; isoforms 1/2/3; Cyclin-dependent kinase 4 inhibitor A; CDK4I; Multiple tumor suppressor 1; MTS-1; p16-INK4a; p16-INK4; p16INK4A
Accession No.	Swiss-Prot: P42771NCBI Gene ID: 1029
Uniprot	P42771
GeneID	1029;
Target Species	human
SDS-PAGE MW	20kd
Concentration	1mg/ml
Formulation	Liquid in PBS containing 50% glycerol, 0.5% BSA and 0.02% sodium azide.
Storage	Store at -20°C/1 year

Application Details

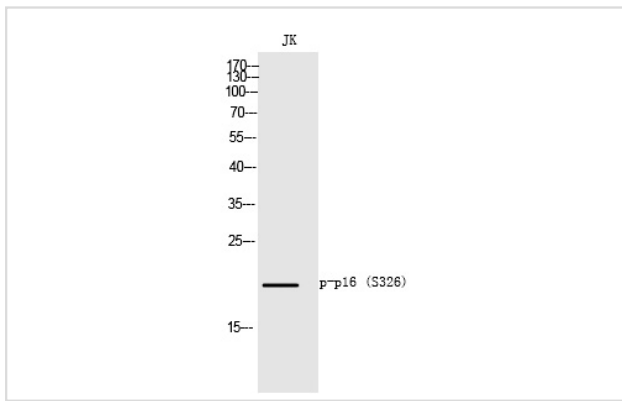
Western blotting: 1/500 - 1/2000

Immunohistochemistry: 1/100 - 1/300

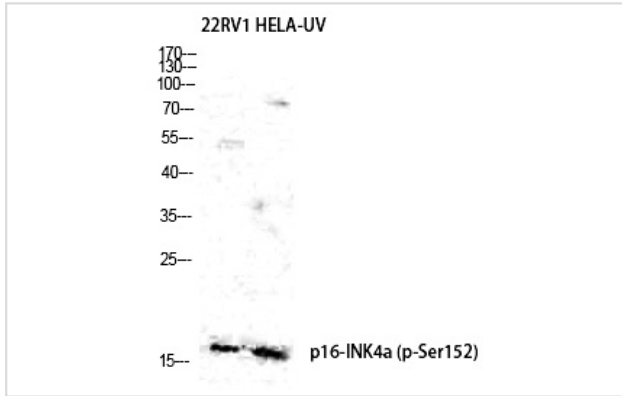
ELISA: 1/5000

Not yet tested in other applications

Images



Western Blot analysis of JK cells using Phospho-p16 (S152) Polyclonal Antibody



Western Blot analysis of 22RV1 HELA cells using Phospho-p16 (S152) Polyclonal Antibody

Note: This product is for in vitro research use only