

Topo II α (Phospho-Ser1525) Polyclonal Antibody

Catalog No: #12344



Package Size: #12344-1 50ul #12344-2 100ul

Orders: order@signalwayantibody.comSupport: tech@signalwayantibody.com

Description

Product Name	Topo II α (Phospho-Ser1525) Polyclonal Antibody
Host Species	Rabbit
Clonality	Polyclonal
Purification	The antibody was affinity-purified from rabbit antiserum by affinity-chromatography using epitope-specific immunogen.
Applications	WB IHC ELISA
Species Reactivity	Hu Ms Rt
Specificity	Phospho-Topo II α (S1525) Polyclonal Antibody detects endogenous levels of Topo II α protein only when phosphorylated at S1525.
Immunogen Type	peptide
Immunogen Description	Synthesized peptide derived from human Topo II α around the phosphorylation site of S1525.
Target Name	Topo II α
Modification	Phospho
Other Names	TOP2A; TOP2; DNA topoisomerase 2-alpha; DNA topoisomerase II; alpha isozyme
Accession No.	Swiss-Prot: P11388NCBI Gene ID: 7153
Uniprot	P11388
GeneID	7153;
Target Species	human
SDS-PAGE MW	190kd
Concentration	1mg/ml
Formulation	Liquid in PBS containing 50% glycerol, 0.5% BSA and 0.02% sodium azide.
Storage	Store at -20°C/1 year

Application Details

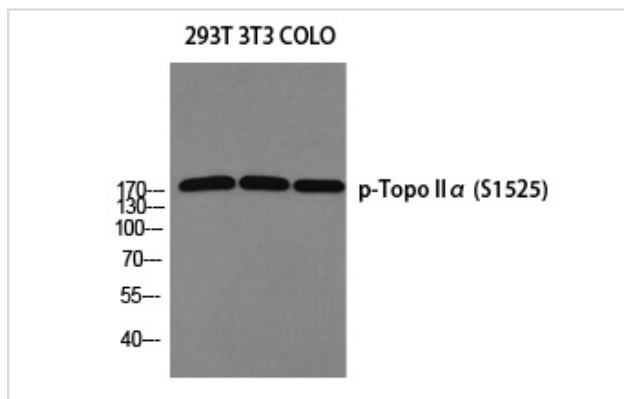
Western blotting: 1/500 - 1/2000

Immunohistochemistry: 1/100 - 1/300

ELISA: 1/5000

Not yet tested in other applications

Images



Western blot analysis of 293T 3T3 COLO using p-Topo II α (S1525) antibody.

Note: This product is for in vitro research use only