

# Adducin $\alpha/\beta$ (Phospho-Ser726/713) Polyclonal Antibody

Catalog No: #12346

Orders: [order@signalwayantibody.com](mailto:order@signalwayantibody.com)

Package Size: #12346-1 50ul #12346-2 100ul

Support: [tech@signalwayantibody.com](mailto:tech@signalwayantibody.com)

## Description

Product Name	Adducin $\alpha/\beta$ (Phospho-Ser726/713) Polyclonal Antibody
Host Species	Rabbit
Clonality	Polyclonal
Purification	The antibody was affinity-purified from rabbit antiserum by affinity-chromatography using epitope-specific immunogen.
Applications	WB IHC IF
Species Reactivity	Hu Ms Rt
Specificity	Phospho-Adducin $\alpha/\beta$ (S726/713) Polyclonal Antibody detects endogenous levels of Adducin $\alpha/\beta$ protein only when phosphorylated at S726/713.
Immunogen Type	peptide
Immunogen Description	Synthesized peptide derived from human Adducin $\alpha/\beta$ around the phosphorylation site of S726/713.
Target Name	Adducin $\alpha/\beta$
Modification	Phospho
Other Names	ADD1; ADDA; Alpha-adducin; Erythrocyte adducin subunit alpha; ADD2; ADDB; Beta-adducin; Erythrocyte adducin subunit beta
Accession No.	Swiss-Prot: P35611/P35612NCBI Gene ID: 118/119
Uniprot	P35611
GeneID	118;
Target Species	human
SDS-PAGE MW	80kd
Concentration	1mg/ml
Formulation	Liquid in PBS containing 50% glycerol, 0.5% BSA and 0.02% sodium azide.
Storage	Store at -20°C/1 year

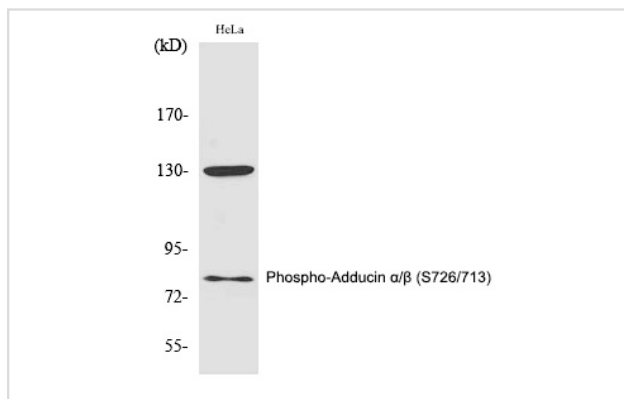
## Application Details

Western blotting: 1/500 - 1/2000

Immunohistochemistry: 1/100 - 1/300

Immunofluorescence: 1/200 - 1/1000

## Images



Western Blot analysis of HeLa cells using Phospho-Adducin  $\alpha/\beta$  (S726/713) Polyclonal Antibody

Note: This product is for in vitro research use only