

Cot (Phospho-Thr290) Polyclonal Antibody

Catalog No: #12348

Package Size: #12348-1 50ul #12348-2 100ul

Orders: order@signalwayantibody.comSupport: tech@signalwayantibody.com

Description

Product Name	Cot (Phospho-Thr290) Polyclonal Antibody
Host Species	Rabbit
Clonality	Polyclonal
Purification	The antibody was affinity-purified from rabbit antiserum by affinity-chromatography using epitope-specific immunogen.
Applications	WB IHC IF ELISA
Species Reactivity	Hu Ms Rt
Specificity	Phospho-Cot (T290) Polyclonal Antibody detects endogenous levels of Cot protein only when phosphorylated at T290.
Immunogen Description	Synthesized peptide derived from human Cot around the phosphorylation site of T290.
Target Name	Cot
Modification	Phospho
Other Names	MAP3K8; COT; ESTF; Mitogen-activated protein kinase kinase kinase 8; Cancer Osaka thyroid oncogene; Proto-oncogene c-Cot; Serine/threonine-protein kinase cot; Tumor progression locus 2; TPL-2
Accession No.	Swiss-Prot: P41279NCBI Gene ID: 1326
Uniprot	P41279
GeneID	1326;
Target Species	human
SDS-PAGE MW	60kd
Concentration	1mg/ml
Formulation	Liquid in PBS containing 50% glycerol, 0.5% BSA and 0.02% sodium azide.
Storage	Store at -20°C/1 year

Application Details

Western blotting: 1/500 - 1/2000

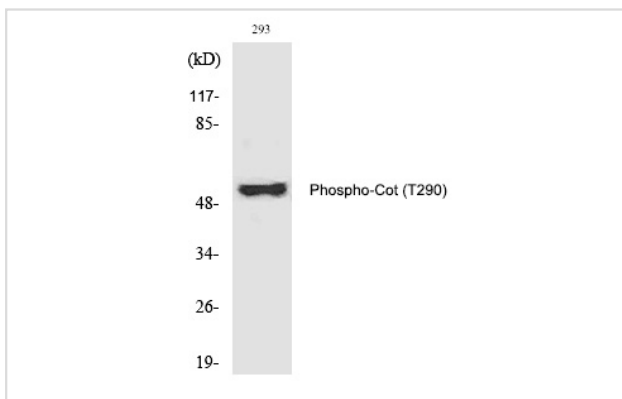
Immunohistochemistry: 1/100 - 1/300

Immunofluorescence: 1/200 - 1/1000

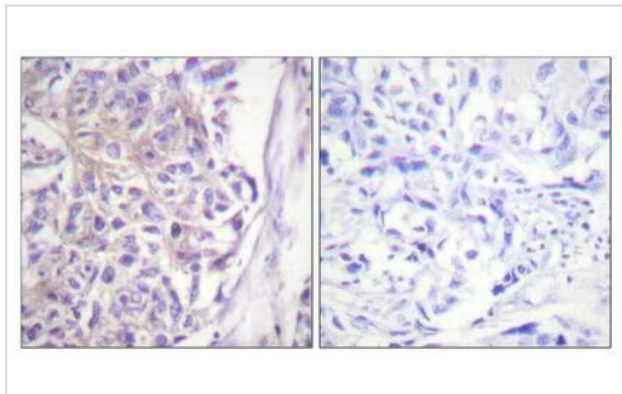
ELISA: 1/40000

Not yet tested in other applications

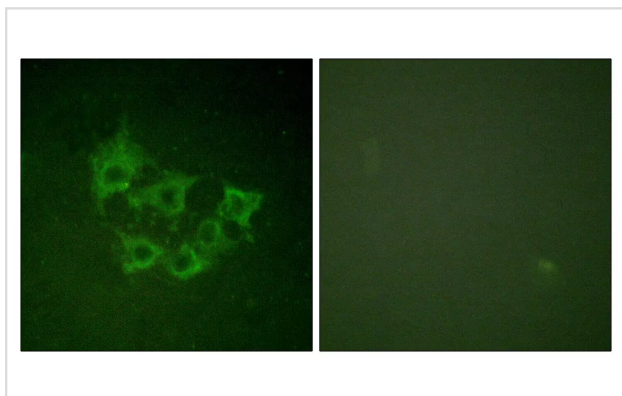
Images



Western Blot analysis of 293 cells using Phospho-Cot (T290) Polyclonal Antibody



Immunohistochemical analysis of paraffin-embedded Human breast cancer. Antibody was diluted at 1:100(4°C overnight). High-pressure and temperature Tris-EDTA,pH8.0 was used for antigen retrieval. Negative control (right) was obtained from antibody pre-absorbed by the immunogen peptide.



Immunofluorescence analysis of HUVEC cells, using COT (Phospho-Thr290) Antibody. The picture on the right was blocked with the immunogen peptide.

Note: This product is for in vitro research use only