

## EF-2 (Phospho-Thr56) Polyclonal Antibody

Catalog No: #12351

Package Size: #12351-1 50ul #12351-2 100ul

Orders: [order@signalwayantibody.com](mailto:order@signalwayantibody.com)Support: [tech@signalwayantibody.com](mailto:tech@signalwayantibody.com)

## Description

|                       |   |
|-----------------------|---|
| Product Name          | EF-2 (Phospho-Thr56) Polyclonal Antibody  |
| Host Species          | Rabbit  |
| Clonality             | Polyclonal  |
| Purification          | The antibody was affinity-purified from rabbit antiserum by affinity-chromatography using epitope-specific immunogen. |
| Applications          | WB IHC IF ELISA   |
| Species Reactivity    | Hu Ms Rt  |
| Specificity           | Phospho-EF-2 (T56) Polyclonal Antibody detects endogenous levels of EF-2 protein only when phosphorylated at T56.     |
| Immunogen Type        | peptide   |
| Immunogen Description | Synthesized peptide derived from human EF-2 around the phosphorylation site of T56.                                   |
| Target Name           | EF-2  |
| Modification          | Phospho   |
| Other Names           | EEF2; EF2; Elongation factor 2; EF-2  |
| Accession No.         | Swiss-Prot: P13639NCBI Gene ID: 1938  |
| Uniprot               | P13639  |
| GeneID                | 1938;   |
| Target Species        | human   |
| SDS-PAGE MW           | 100kd   |
| Concentration         | 1mg/ml  |
| Formulation           | Liquid in PBS containing 50% glycerol, 0.5% BSA and 0.02% sodium azide.   |
| Storage               | Store at -20°C/1 year   |

## Application Details

Western blotting: 1/500 - 1/2000

Immunohistochemistry: 1/100 - 1/300

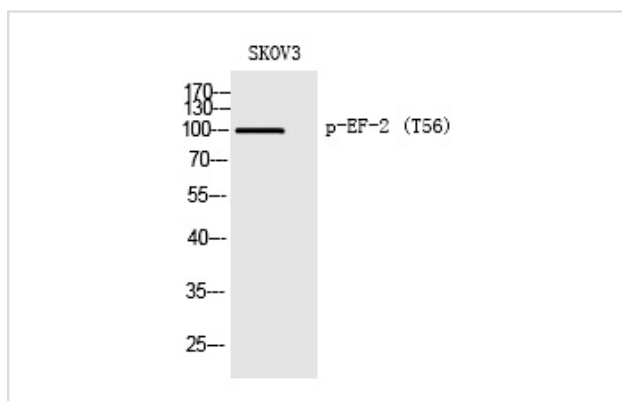
Immunofluorescence: 1/200 - 1/1000

ELISA: 1/10000

Not yet tested in other applications

## Images

Western Blot analysis of SKOV3 cells using Phospho-EF-2 (T56) Polyclonal Antibody



Note: This product is for in vitro research use only