

Splicing factor 1 (Phospho-Ser82) Polyclonal Antibody

Catalog No: #12357



Package Size: #12357-1 50ul #12357-2 100ul

Orders: order@signalwayantibody.comSupport: tech@signalwayantibody.com

Description

Product Name	Splicing factor 1 (Phospho-Ser82) Polyclonal Antibody
Host Species	Rabbit
Clonality	Polyclonal
Purification	The antibody was affinity-purified from rabbit antiserum by affinity-chromatography using epitope-specific immunogen.
Applications	WB IHC IF ELISA
Species Reactivity	Hu Ms Mk
Specificity	Phospho-Splicing factor 1 (S82) Polyclonal Antibody detects endogenous levels of Splicing factor 1 protein only when phosphorylated at S82.
Immunogen Type	peptide
Immunogen Description	Synthesized peptide derived from human Splicing factor 1 around the phosphorylation site of S82.
Target Name	Splicing factor 1
Modification	Phospho
Other Names	SF1; ZFM1; ZNF162; Splicing factor 1; Mammalian branch point-binding protein; BBP; mBBP; Transcription factor ZFM1; Zinc finger gene in MEN1 locus; Zinc finger protein 162
Accession No.	Swiss-Prot: Q15637NCBI Gene ID: 7536
Uniprot	Q15637
GeneID	7536;
Target Species	human
SDS-PAGE MW	68kd
Concentration	1mg/ml
Formulation	Liquid in PBS containing 50% glycerol, 0.5% BSA and 0.02% sodium azide.
Storage	Store at -20°C/1 year

Application Details

Western blotting: 1/500 - 1/2000

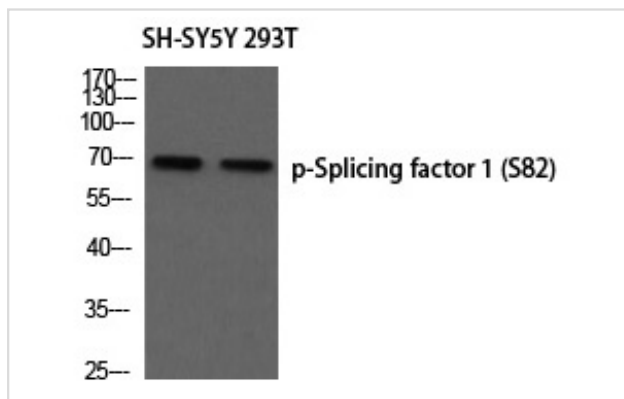
Immunohistochemistry: 1/100 - 1/300

Immunofluorescence: 1/200 - 1/1000

ELISA: 1/5000

Not yet tested in other applications

Images



Western blot analysis of SH-SY5Y 293T using p-Splicing factor 1 (S82) antibody.

Note: This product is for in vitro research use only